



## PROGRAMME OUTCOMES

### 1. PHARMACY KNOWLEDGE

Possess knowledge and comprehension of the core information associated with the profession of pharmacy, including biomedical sciences; pharmaceutical sciences; behavioural, social, and administrative pharmacy sciences; and manufacturing practices.

### 2. THINKING ABILITIES

Utilise the principles of scientific inquiry, thinking analytically, clearly and critically, while solving problems and making decisions during daily practice. Find, analyse, evaluate and apply information systematically and shall make defensible decisions.

### 3. PLANNING ABILITIES

Demonstrate effective planning abilities including time management, resource management, delegation skills and organisational skills. Develop and implement plans and organise work to meet deadlines.

### 4. LEADERSHIP SKILLS

Understand and consider the human reaction to change, motivation issues, leadership and team building when planning changes required for fulfilment of practice professional and societal responsibilities. Assume participatory roles as responsible citizens or leadership roles, whenever appropriate, to facilitate improvement in health and well being.

### 5. PROFESSIONAL IDENTITY

Understand, analyse and communicate the value of their professional roles in society (e.g. health care professionals, suppliers of pharmaceuticals, promoters of health, educators, business managers, employers, employees) through consideration of historical, social, economic and political issues.

### 6. THE PHARMACIST AND SOCIETY

Apply reasoning informed by the contextual knowledge to assess societal, health, safety, legal, and cultural issues and the consequent responsibilities relevant to the professional pharmacy practice.

### 7. ENVIRONMENT AND SUSTAINABILITY

Understand the impact of the professional pharmacy solutions in societal and environmental contexts, and demonstrate the knowledge of, and need for sustainable development.

### 8. ETHICS

Honour personal values and apply ethical principles in professional and social contexts. Demonstrate behaviour that recognises cultural and personal variability in values, communication and lifestyles. Use ethical frameworks, apply ethical principles while making decisions, and take responsibility for the outcomes associated with the decisions.

### 9. COMMUNICATION

Communicate effectively with the pharmacy community and with society at large, such as, being able to comprehend and write effective reports, make effective presentations and documentation, and give and receive clear instructions.

### 10. MODERN TOOL USAGE

Learn, select, and apply appropriate methods and procedures, resources, and modern pharmacy-related computing tools with an understanding of the limitations.

### 11. LIFE LONG LEARNING

Recognise the need for, and have the preparation and ability to engage in independent and life-long learning in the broadest context of technological change. Self-assess and use feedback effectively from others to identify learning needs and to satisfy these needs on an ongoing basis.

GPS Map Camera



Google

Nellore, Andhra Pradesh, India  
Unnamed Road, Nellore, Andhra Pradesh 524003, India  
Lat 14.429899°  
Long 80.012294°  
18/09/24 05:34 PM GMT +05:30

PRINCIPAL  
NARAYANA PHARMACY COLLEGE  
NELLORE - 524 002.



### PROGRAMME OUTCOMES

#### 1. PHARMACY KNOWLEDGE

Possess knowledge and comprehension of the core information associated with the profession of pharmacy, including biomedical sciences, pharmaceutical sciences, behaviour, social, and administrative pharmacy sciences; and manufacturing practices.

#### 2. THINKING ABILITIES

Utilise the principles of scientific inquiry, thinking analytically, clearly and critically, while solving problems and making decisions during daily practice. Find, analyse, evaluate and apply information systematically and what make defensible decisions.

#### 3. PLANNING ABILITIES

Demonstrate effective planning abilities including time management, resource management, delegation skills and organisational skills. Develop and implement plans and organise work to meet deadlines.

#### 4. LEADERSHIP SKILLS

Understand and consider the human reaction to change, motivation issues, leadership and team building when planning changes required for fulfilment of practice, professional and societal responsibilities. Assume participatory roles as responsible citizens or leadership roles, whenever appropriate, to facilitate improvement in health and well-being.

#### 5. PROFESSIONAL IDENTITY

Understand, analyse and communicate the value of their professional roles in society (e.g. health care professionals, suppliers at pharmaceuticals, promoters of health, educators, business managers, employers, employees) through consideration of historical, social, economic and political issues.

#### 6. THE PHARMACIST AND SOCIETY

Apply reasoning informed by the contextual knowledge to assess societal, health, safety, legal and cultural issues and the consequent responsibilities relevant to the professional pharmacy practice.

#### 7. ENVIRONMENT AND SUSTAINABILITY

Understand the impact of the professional pharmacy solutions in societal and environmental contexts, and demonstrate the knowledge of, and need for sustainable development.

#### 8. ETHICS

Honour personal values and apply ethical principles in professional and social contexts. Demonstrate behaviour that recognises cultural and personal variability in ethics, communication and lifestyles. Use ethical frameworks, apply ethical principles while making decisions, and take responsibility for the outcomes associated with the decisions.

#### 9. COMMUNICATION

Communicate effectively with the pharmacy community and with society at large, such as being able to comprehend and write effective reports, make effective presentations and documentation, and give and receive clear instructions.

#### 10. MODERN TOOL USAGE

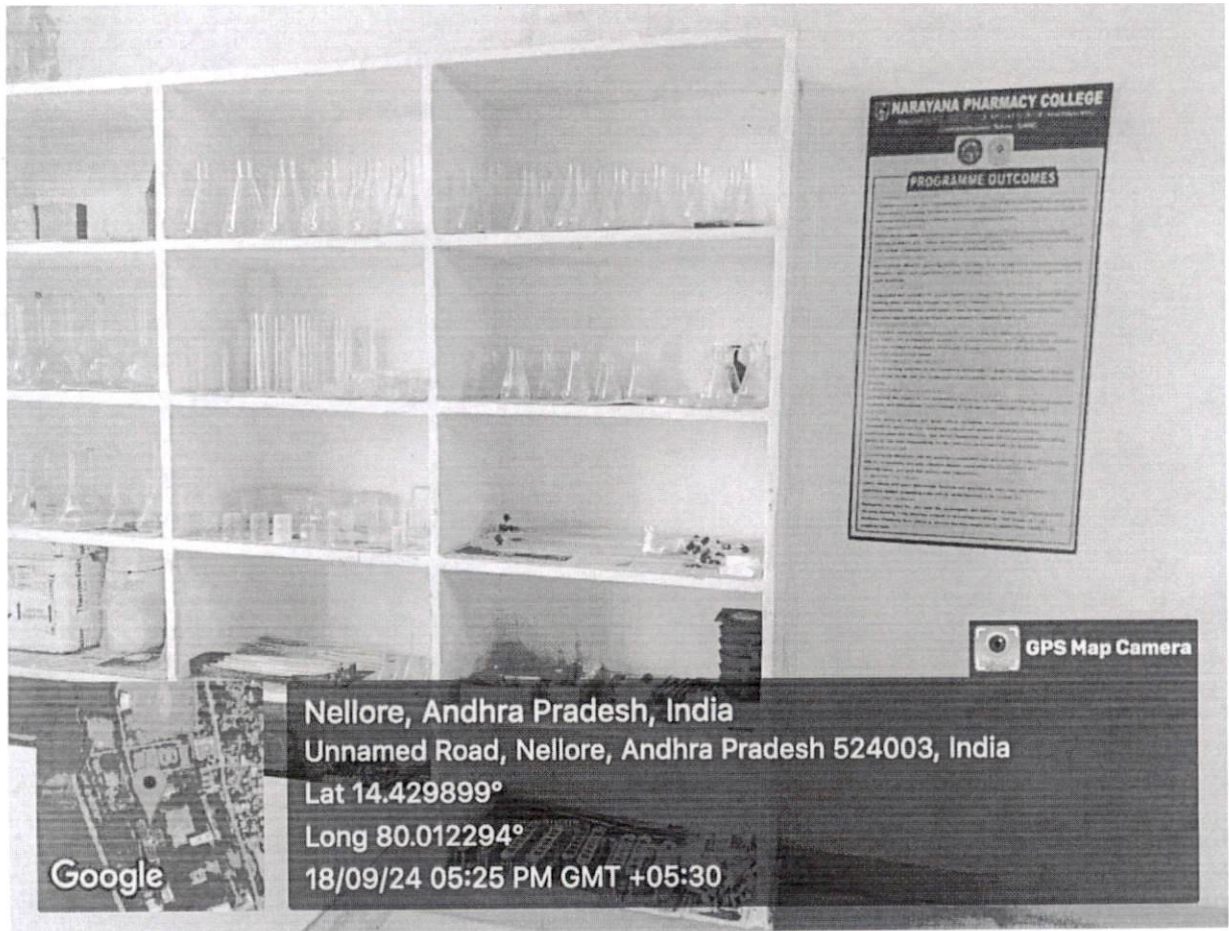
Learn, select, and apply appropriate methods and procedures, resources, and modern pharmacy related computing tools with an understanding of the limitations.

#### 11. LIFE-LONG LEARNING

Recognise the need for, and have the preparation and ability to engage in independent and life-long learning in the broadest context of technological change. Seek, assess and use feedback effectively from others to identify learning needs and to satisfy these needs for an ongoing basis.



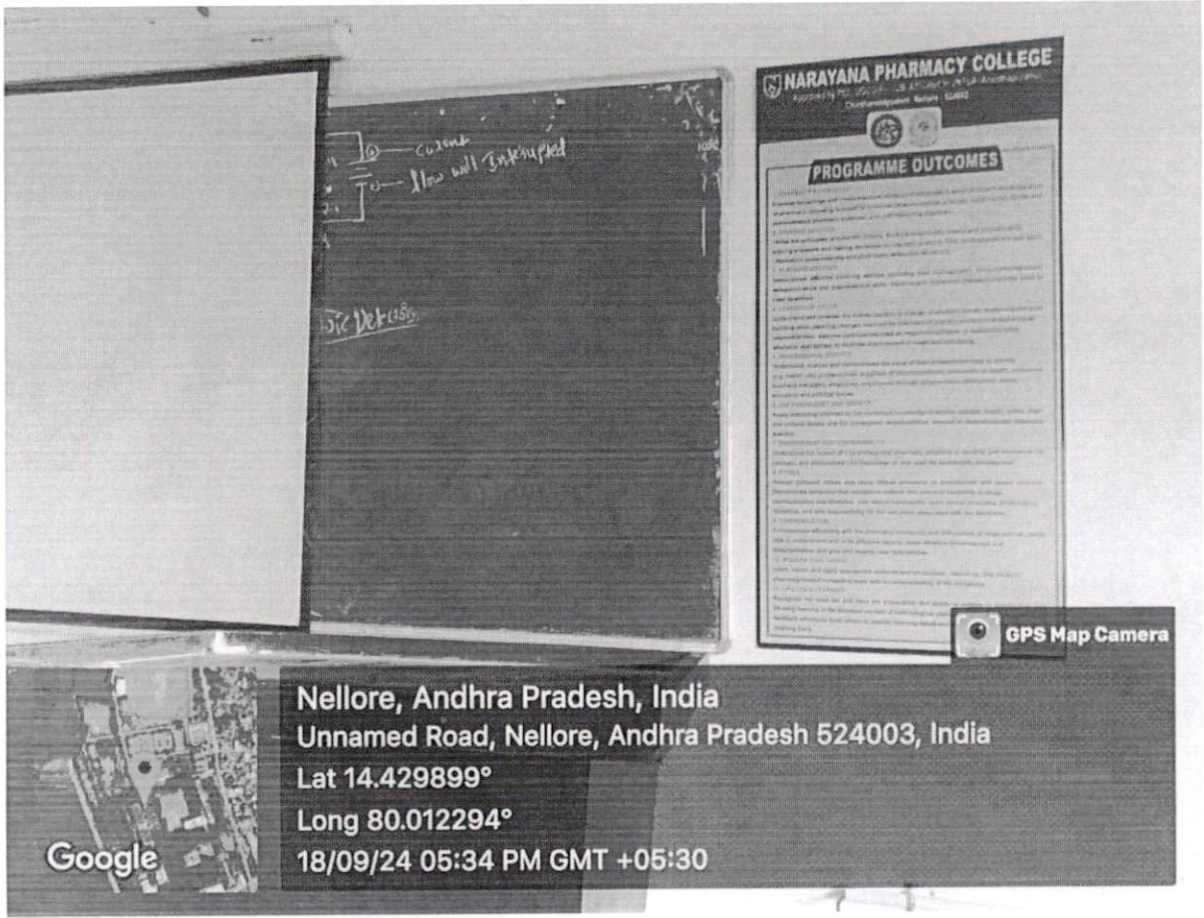
**PRINCIPAL**  
**NARAYANA PHARMACY COLLEGE**  
**NELLORE - 524 002.**



Nellore, Andhra Pradesh, India  
Unnamed Road, Nellore, Andhra Pradesh 524003, India  
Lat 14.429899°  
Long 80.012294°  
18/09/24 05:25 PM GMT +05:30

Google

✓  
PRINCIPAL  
NARAYANA PHARMACY COLLEGE  
NELLORE - 524 002.



Nellore, Andhra Pradesh, India  
Unnamed Road, Nellore, Andhra Pradesh 524003, India  
Lat 14.429899°  
Long 80.012294°  
18/09/24 05:34 PM GMT +05:30

PRINCIPAL  
NARAYANA PHARMACY COLLEGE  
NELLORE - 524 002.

**NARAYANA PHARMACY COLLEGE**  
 Approved by PCI, 2002-03, for offering B.Pharmacy  
 Government of Andhra Pradesh

**PROGRAMME OUTCOMES**

**1. KNOWLEDGE**  
 Upon completion of the programme of B.Pharmacy, the graduates will be able to demonstrate the following knowledge:

**2. SKILLS**  
 Upon completion of the programme of B.Pharmacy, the graduates will be able to demonstrate the following skills:

**3. ATTITUDE**  
 Upon completion of the programme of B.Pharmacy, the graduates will be able to demonstrate the following attitude:

**4. COMMUNICATION**  
 Upon completion of the programme of B.Pharmacy, the graduates will be able to demonstrate the following communication skills:

**5. PROFESSIONALISM**  
 Upon completion of the programme of B.Pharmacy, the graduates will be able to demonstrate the following professionalism:

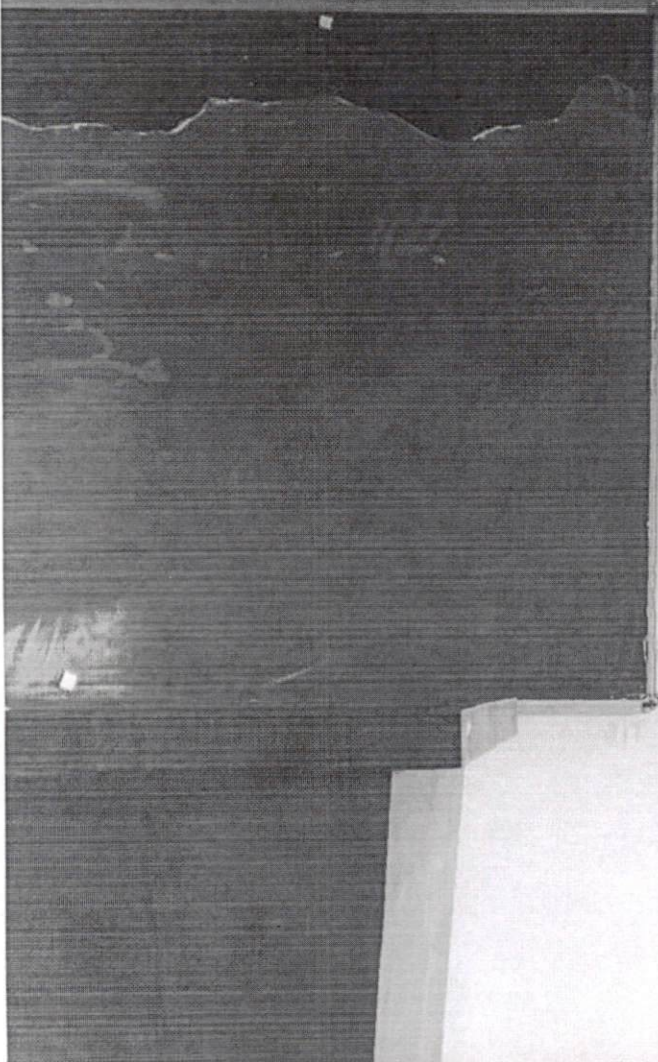
**6. RESEARCH**  
 Upon completion of the programme of B.Pharmacy, the graduates will be able to demonstrate the following research skills:

**7. INDEPENDENT LEARNING**  
 Upon completion of the programme of B.Pharmacy, the graduates will be able to demonstrate the following independent learning skills:

**8. TEAMWORK**  
 Upon completion of the programme of B.Pharmacy, the graduates will be able to demonstrate the following teamwork skills:

**9. SOCIAL RESPONSIBILITY**  
 Upon completion of the programme of B.Pharmacy, the graduates will be able to demonstrate the following social responsibility skills:

**10. ENVIRONMENTAL SUSTAINABILITY**  
 Upon completion of the programme of B.Pharmacy, the graduates will be able to demonstrate the following environmental sustainability skills:



GPS Map Camera



**Nellore, Andhra Pradesh, India**  
**Unnamed Road, Nellore, Andhra Pradesh 524003, India**  
**Lat 14.429899°**  
**Long 80.012294°**  
**18/09/24 05:30 PM GMT +05:30**

*M*

**PRINCIPAL**  
**NARAYANA PHARMACY COLLEGE**  
**NELLORE - 524 002.**



✓

PRINCIPAL  
NARAYANA PHARMACY COLLEGE  
NELLŪRE - 524 002.