



NARAYANA PHARMACY COLLEGE

(Approved by PCI & AICTE, New Delhi) (Affiliated to JNTUA Ananthapuramu)

Recognized u/s 2(f) & 12(B) of the UGC Act, 1956, New Delhi,

ISO 9001:2015 Certified Institution

Chinthareddypalem, Nellore-524003, A.P. India.

Phone & Fax No :0861-2317966; Cell No :+91- 9392901053

Email: principal.npc@narayanagroup.com Visit us:www.narayanapharmacycollege.com

LIST OF VALUE ADDED PROGRAMS

ACADEMIC YEAR: 2019-2020

S.NO	NAME OF THE COURSE	COURSE CODE	DURATION OF COURSE	NO OF PARTICIPANTS
1.	HOSPITAL BUSINESS MANAGEMENT	NPC-HBM-VAC1	36	114
2.	PERSONALITY DEVELOPMENT	NPC-PD-VAC2	36	87
3.	INTRODUCTION TO PATENTS	NPC-IP-VAC3	36	87
4.	BEHAVIORIAL STUDIES BY MAZE APPARATUS	NPC-BSMA-VAC4	36	225
5.	YOUR FOOD AND ITS UTILIZATION	NPC-YFU-VAC5	36	92
6.	TOXICOLOGY	NPC-TC-VAC6	36	72


PRINCIPAL


PRINCIPAL
NARAYANA PHARMACY COLLEGE
NELLORE - 524 002

PRINCIPAL
NARAYANA PHARMACY COLLEGE
NELLORE - 524 002



NARAYANA PHARMACY COLLEGE

(Approved by PCI & AICTE, New Delhi) (Affiliated to JNTUA, Ananthapuramu)

Chinthareddypalem, Nellore - 524 002, A. P. India.

Phone & Fax No: 0861 - 2317966 Cell No. +91 9100051603

Email. npc_nellore@yahoo.com Visit us: www.narayanapharmacycollege.com

NPC/VAC 1/2019-2020

Date: 09-07-2019

CIRCULAR

This is to inform all students that our college is conducting a value added Program on “HOSPITAL BUSINESS MANAGEMENT NPC-HBM-CER” from 15-07-2019 to 20-07-2019. All the interested candidates give their names to the coordinator on or before 13-07-2019. Hence, all the students are here by informed to attend the classes without fail.

Venue : Seminar hall, Narayana Pharmacy College

Coordinator : Mrs. Salma Shaik,

Associate Professor

Department of Pharmaceutical Chemistry

PRINCIPAL

PRINCIPAL
NARAYANA PHARMACY COLLEGE
NELLORE - 524 002

Copy to:

1. Director's Office
2. Principal's office
3. All HODs for circulating among students

PRINCIPAL
NARAYANA PHARMACY COLLEGE
NELLORE - 524 002

Value Added Course on

HOSPITAL BUSINESS MANAGEMENT

Date: 15-7-2019 TO 20-7-2019

Scope:

1. Financial Management: Budgeting, financial forecasting, revenue cycle management, and cost control within healthcare settings.
2. Operations Management: Efficient management of hospital operations, including resource allocation, workflow optimization, and quality improvement initiatives.
3. Strategic Planning: Developing and implementing strategic plans aligned with the hospital's mission, vision, and market demands.
4. Human Resource Management: Recruitment, training, retention, and performance management of healthcare personnel.
5. Regulatory Compliance: Understanding and adhering to healthcare regulations, compliance standards, and ethical considerations.

Resource Person:

Dr. V. Kumar Associate Professor

Dr. P. Yanadaiah Associate Professor

Last Date For Registration :

13/7/2019

Outcomes:

- **Operational Excellence:** Improved operational efficiency and cost-effectiveness in hospital management.
- **Financial Health:** Enhanced financial performance and sustainability of the hospital.
- **Patient Satisfaction:** Improved patient satisfaction and outcomes through better service delivery.


PRINCIPAL

NARAYANA PHARMACY COLLEGE
NELLORE - 524 002.

Overall, a hospital business management program aims to equip healthcare professionals with the knowledge and skills necessary to effectively manage healthcare facilities, ensuring operational excellence, financial sustainability, and high-quality patient care.



NARAYANA PHARMACY COLLEGE

(Approved by PCI & AICTE, New Delhi) (Affiliated to JNTUA Ananthapuramu)
Recognized u/s 2(f) & 12(B) of the UGC Act, 1956, New Delhi,
Chinthareddypalem, Nellore-524003, A.P .India.
Phone & Fax No :0861-2317966; Cell No :+91-9100051603
Email: principal.npc@narayanagroup.com Visit us:www.narayanapharmacycollege.com

DATE: 23-7-2019

REPORT ON HOSPITAL BUSINESS MANAGEMENT

1.	Name Of The Activity	HOSPITAL BUSINESS MANAGEMENT		
2.	Date Of The Activity	15-7-2019 TO 20-7-2019		
3.	Organized By	Department Of Pharmaceutical Chemistry		
4.	Place Of Activity	Narayana Pharmacy College -Seminar Hall		
5.	Resource PERSON	DR. B.KUMAR , Professor & Mr. P. YANADIAH, Assistant Professor		
6.	Type Of Activity	Value Added Program		
7.	Participation And Involved By	Involved By BPHARM –III- I,PHARM D-III	Students 114	Total participation 114
8.	Content Discussed	<ol style="list-style-type: none">1. Hospital Business Model2. Financial Management3. Operational Management4. Human Resources Management5. Patient Care Management6. Strategic Planning7. Compliance and Risk Management8. Marketing and Community Relations		
9.	Suggested improvements	Students should a gain the knowledge		
10.	Enclosures	1.signature forms 2.brouchure 3.course schedules		


PRINCIPAL
NARAYANA PHARMACY COLLEGE
NELLORE - 524 002.



NARAYANA PHARMACY COLLEGE

(Approved by PCI & AICTE, New Delhi) (Affiliated to JNTUA Ananthapuramu)

Recognized u/s 2(f) & 12(B) of the UGC Act, 1956, New Delhi,
Chinthareddypalem, Nellore-524003, A.P. India.

Phone & Fax No :0861-2317966; Cell No :+91-9100051603

Email: principal.npc@narayanagroup.com Visit us: www.narayanapharmacycollege.com

EVENT OVERVIEW:

Resource person Dr. B.KUMAR explained the students about the Model of Hospital Business Describe the hospital's revenue streams, including patient payments, government grants, and insurance reimbursements. Cost Structure: A summary of the main expenditures, such as capital, labor, and operating costs. Value Proposition. The hospital's strategy for setting itself apart in terms of offerings and caliber of care. Financial Management Budgeting: A summary of the efficiency of the hospital's budgeting procedure. Analyzing financial statements, such as cash flow, balance sheet, and income statement, is known as financial performance. Revenue cycle management is the study of receivables management, collections, and billing procedures. Cost control measures include managing and cutting expenses. Management of Operations Facility management is the upkeep and supervision of medical facilities' hardware and furnishings. Supply chain management includes supplier connections, inventory control, and procurement procedures. Workflow optimization refers to methods for raising operational efficiency in hospitals. Resource person Mr. P. YANADIAH also given the details about Human Resources Management Staffing: Approaches to hiring, educating, and keeping administrative and medical personnel. Performance management refers to methods for assessing and enhancing employee performance. Compensation and Benefits: An examination of benefit plans and pay scales.

Management of Patient Care Measures to guarantee the highest levels of patient care and safety are known as quality assurance. Patient satisfaction: Techniques for enhancing patient encounters and addressing grievances. Care Coordination: Methods for overseeing and arranging care across several departments. The Art of Strategic Planning SWOT analysis is the process of identifying the opportunities, threats, weaknesses, and strengths of a hospital. Long-term Objectives: Strategic objectives and a roadmap for expansion and improvement. Adoption of new ideas and technologies to improve care and operational effectiveness is known as innovation and technology. Risk Control and Compliance Regulatory Compliance: A summary of following rules and guidelines in the healthcare industry.

PRINCIPAL

NARAYANA PHARMACY COLLEGE

NELLORE - 524 002.

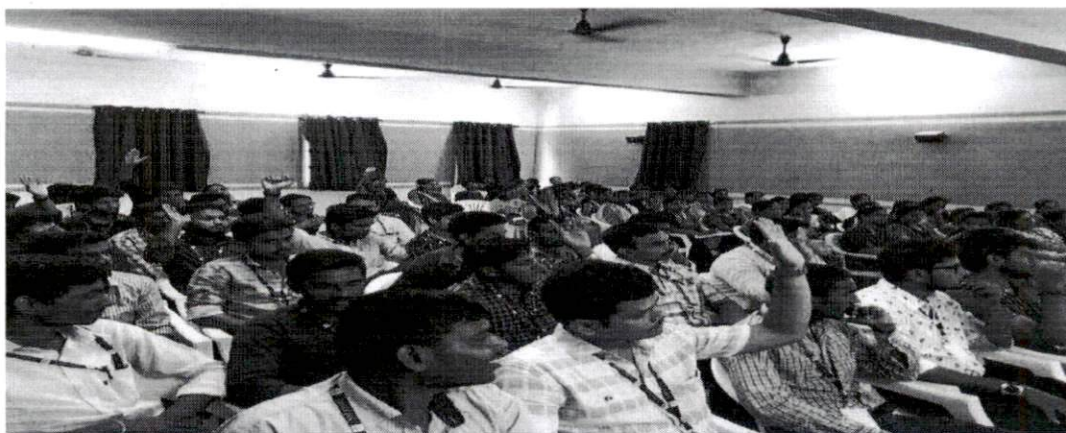


NARAYANA PHARMACY COLLEGE

(Approved by PCI & AICTE, New Delhi) (Affiliated to JNTUA Ananthapuramu)
Recognized u/s 2(f) & 12(B) of the UGC Act, 1956, New Delhi,
Chinthareddypalem, Nellore-524003, A.P .India.
Phone & Fax No :0861-2317966; Cell No :+91-9100051603
Email: principal.npc@narayanagroup.com Visit us:www.narayanapharmacycollege.com



**STUDENTS WITH PARTICIPATED IN THE HOSPITAL BUSINESS
MANAGEMENT PROGRAM ON 15-7-2019**



**STUDENTS WITH PARTICIPATED IN THE HOSPITAL BUSINESS
MANAGEMENT PROGRAM ON 15-7-2019**


PRINCIPAL


PRINCIPAL
NARAYANA PHARMACY COLLEGE
NELLORE - 524 002.

PRINCIPAL
NARAYANA PHARMACY COLLEGE
NELLORE - 524 002



NARAYANA PHARMACY COLLEGE

(Approved by PCI & AICTE, New Delhi) (Affiliated to JNTUA, Ananthapuramu)

Chinthareddypalem, Nellore - 524 002, A. P. India.

Phone & Fax No: 0861 - 2317966 Cell No. +91 9100051603

Email. npc_nellore@yahoo.com Visit us: www.narayanapharmacycollege.com

NPC/VAC 2 /2019-2020

Date: 10-09-2019

CIRCULAR

This is to inform all the students that our college is conducting a value added Program on “PERSONALITY DEVELOPMENT” from 16-09-2019 to 21-09-2019. All the interested candidates give their names to the coordinator on or before 14-09-2019. Hence, all the students are here by informed to attend the classes without fail.

Venue : Seminar hall, Narayana Pharmacy College

Coordinator : Mrs. Salma Shaik,
Associate Professor
Department of Pharmaceutical Chemistry


PRINCIPAL

PRINCIPAL
NARAYANA PHARMACY COLLEGE
NELLORE - 524 002

Copy to:

1. Director's Office
2. Principal's office
3. All HODs for circulating among students


PRINCIPAL
NARAYANA PHARMACY COLLEGE
NELLORE - 524 002



NARAYANA PHARMACY COLLEGE

Approved by PCI, AICTE & UGC Affiliated to JNTUA (Ananthapuram)

Chinthareddypalem, NELLORE.

DEPARTMENT OF PHARMACEUTICAL CHEMISTRY

A Value Added Program on

“ PERSONALITY DEVELOPMENT ”

Date : 16-09-2019 to 21-09-2019

Resource Persons :

1. Dr. Gangineni Dhananjhay Professor

2. Dr. R vani Professor

PRINCIPAL
NARAYANA PHARMACY COLLEGE
NELLORE - 524 002.



Venue

Seminar Hall



NARAYANA PHARMACY COLLEGE

(Approved by PCI & AICTE, New Delhi) (Affiliated to JNTUA Ananthapuramu)
Recognized u/s 2(f) & 12(B) of the UGC Act, 1956, New Delhi,
Chinthareddypalem, Nellore-524003, A.P. India.
Phone & Fax No :0861-2317966; Cell No :+91-9100051603
Email: principal.npc@narayanagroup.com Visit us:www.narayanapharmacycollege.com

DATE: 24-9-2019

REPORT ON PERSONALITY DEVELOPMENT

1	Name Of The Activity	PERSONALITY DEVELOPMENT		
2	Date Of The Activity	16-9-2019 TO 21-9-2019		
3	Organized By	Department of Pharmaceutical Chemistry		
4	Place Of Activity	Narayana Pharmacy College -Seminar Hall		
5	Resource PERSON	Ms.SAI SARANYA.A, Assistant Professor & Ms.AVS. GITA SAMEERA, Assistant Professor		
6	Type Of Activity	Value Added Program		
7	Participation And Involved By	Involved By BPHARM -III-II	Students 87	Total participation 87
9	Suggested improvements	Students should a gain the knowledge		
10	Enclosures	1.signature forms 2.brouchure 3.course schedules		


PRINCIPAL
NARAYANA PHARMACY COLLEGE
NELLORE - 524 002.



NARAYANA PHARMACY COLLEGE

(Approved by PCI & AICTE, New Delhi) (Affiliated to JNTUA Ananthapuramu)

Recognized u/s 2(f) & 12(B) of the UGC Act, 1956, New Delhi,

Chinthareddypalem, Nellore-524003, A.P. India.

Phone & Fax No :0861-2317966; Cell No :+91-9100051603

Email: principal.npc@narayanagroup.com Visit us: www.narayanapharmacycollege.com

A one value added PROGRAM on “**Personality Development**” was organized 16-9-2019 TO 21-9-2019 by inviting **Ms. SAI SARANYA.A** as a Resource Person in Narayana Pharmacy College, Nellore. **87** students from B.PHARMACY III - II had actively participated in the Program and have gained a thorough knowledge on Overview: An explanation of the stages involved in personality development. Importance: The value of personality development in both private and work settings. Conceptual Structure Important ideas: Synopsis of the main ideas about the evolution of personality, such as Maslow's hierarchy of needs, Freud's psychodynamic theory, and the Big Five personality traits. Developmental Stages: Describes the various phases of personality development, such as childhood, adolescence, and maturity. Aspects of Character Development Self-awareness: The capacity to recognize and accept one's own virtues, faults, ideals, and beliefs. Self-Esteem: The part self-worth and confidence play in the formation of a person's personality. Emotional Intelligence: Perceiving and controlling one's own feelings as well as those of others. Proficiency in both oral and nonverbal communication techniques. Interpersonal Skills: Establishing and preserving wholesome connections. Techniques for Individual Development Goal-setting: Establishing SMART objectives for your own growth.

Ms. AVS. GITA SAMEERA resource person has spoken on Plans for Personal Development building a Development Plan A step-by-step guide for building a customized development plan. Action Steps: Specific steps and exercises to fulfill personal development objectives. Monitoring Progress Techniques for keeping tabs on developments and adjusting as necessary. Overcoming Obstacles Common Barriers Typical roadblocks to one's own growth (motivation, procrastination, etc.). Methods to Surmount: Workable methods to get beyond these obstacles. The Impact of outside Sources Family and Social Environment the ways in which social interactions and family affect the formation of personality. Education and Professional Life: Impact of educational and job experiences on personality growth. Cultural & Social Influences: stories are people who have advanced significantly in their personality development how society conventions and culture shape personality. Examples and Case Studies Success.


PRINCIPAL
NARAYANA PHARMACY COLLEGE
NELLORE - 524 002.



NARAYANA PHARMACY COLLEGE

(Approved by PCI & AICTE, New Delhi) (Affiliated to JNTUA Ananthapuramu)

Recognized u/s 2(f) & 12(B) of the UGC Act, 1956, New Delhi,
Chinthareddypalem, Nellore-524003, A.P. India.

Phone & Fax No :0861-2317966; Cell No :+91-9100051603

Email: principal.npc@narayanagroup.com Visit us:www.narayanapharmacycollege.com



STUDENTS ARE PARTICIPATING IN THE PROGRAM ON 16-9-2019


PRINCIPAL

PRINCIPAL
NARAYANA PHARMACY COLLEGE
NELLORE - 524 002


PRINCIPAL
NARAYANA PHARMACY COLLEGE
NELLORE - 524 002.



NARAYANA PHARMACY COLLEGE

(Approved by PCI & AICTE, New Delhi) (Affiliated to JNTUA, Ananthapuramu)

Chinthareddypalem, Nellore - 524 002, A. P. India.

Phone & Fax No: 0861 - 2317966 Cell No. +91 9100051603

Email. npc_nellore@yahoo.com Visit us: www.narayanapharmacycollege.com

NPC/VAC 3 /2019-2020

Date: 26-10-2019

CIRCULAR

This is to inform all the students that our college is conducting a value added Program on "INTRODUCTION TO PATENTS" from 01-11-2019 to 07-11-2019. All the interested candidates give their names to the coordinator on or before 30-10-2019. Hence, all the students are here by informed to attend the classes without fail.

Venue : Seminar hall, Narayana Pharmacy College

Coordinator : Mrs. Salma Shaik,

Associate Professor

Department of Pharmaceutical Chemistry

PRINCIPAL

PRINCIPAL

NARAYANA PHARMACY COLLEGE

NELLORE - 524 002

Copy to:

1. Director's Office
2. Principal's office
3. All HODs for circulating among students

PRINCIPAL

NARAYANA PHARMACY COLLEGE

NELLORE - 524 002

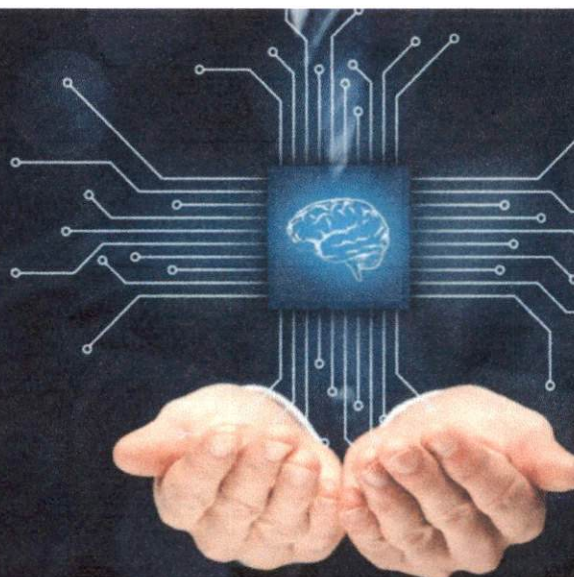


NARAYANA PHARMACY COLLEGE

Approved by PCI, UGC, 2(F) & 2B Affiliated to JNTUA (Ananthapuramu)

Chinthareddypalem, Nellore

Value Added Course on **INTRODUCTION TO PATENTS**



Date: 1-11-2019 to 7-11-2019

INTRODUCTION TO PATENTS

A patent is a form of intellectual property that grants exclusive rights to an inventor or assignee for a limited period, typically 20 years from the filing date, to exclude others from making, using, or selling an invention. Patents are crucial in protecting innovation and incentivizing inventors to disclose their inventions to the public.

****SCOPE OF PATENTS****

1. ****Legal Protection****: Understanding the legal framework and requirements for obtaining a patent in various jurisdictions.
2. ****Types of Patents****: Exploring different types, including utility patents (for inventions or processes), design patents (for ornamental designs), and plant patents (for new plant varieties).
3. ****Patentability Criteria****: Learning about the criteria inventions must meet to be eligible for patent protection, such as novelty, non-obviousness, and utility.

Overall, an introduction to patents aims to equip individuals with the knowledge and tools necessary to navigate the patenting process successfully, protect their intellectual property, and capitalize on their innovations for commercial and societal benefit.

RESOURCE PERSON:

SK. KARIMUNISSA Assistant Professor

SALMA SHAIK Assistant Professor

Last Date For Registration:

30/12/2019


PRINCIPAL

NARAYANA PHARMACY COLLEGE

NELLORE - 524 002.



NARAYANA PHARMACY COLLEGE

(Approved by PCI & AICTE, New Delhi) (Affiliated to JNTUA Ananthapuramu)
Recognized u/s 2(f) & 12(B) of the UGC Act, 1956, New Delhi,
Chinthareddypalem, Nellore-524003, A.P. India.
Phone & Fax No :0861-2317966; Cell No :+91-9100051603
Email: principal.npc@narayanagroup.com Visit us:www.narayanapharmacycollege.com

DATE: 11-11-2019

REPORT ON "INTRODUCTION TO PATENTS"

1	Name Of The Activity	INTRODUCTION TO PATENTS		
2	Date Of The Activity	1-11-2019 TO 7-11-2019		
3	Organized By	Department Of Pharmaceutical Chemistry		
4	Place Of Activity	Narayana Pharmacy College -Seminar Hall		
5	Resource PERSON	Mr. T. SRI KRISHNA, Assistant Professor & Mrs.SK. SALMA , Assistant Professor		
6	Type Of Activity	Value Added Program		
7	Participation And Involved By	Involved By BPHARM - II-I	Students 87	Total participation 87
9	Suggested improvements	Students should a gain the knowledge		
10	Enclosures	1.signature forms 2.brouchure 3.course schedules		


PRINCIPAL
NARAYANA PHARMACY COLLEGE
NELLORE - 524 002.



NARAYANA PHARMACY COLLEGE

(Approved by PCI & AICTE, New Delhi) (Affiliated to JNTUA Ananthapuramu)
Recognized u/s 2(f) & 12(B) of the UGC Act, 1956, New Delhi,
Chinthareddypalem, Nellore-524003, A.P. India.
Phone & Fax No :0861-2317966; Cell No :+91-9100051603
Email: principal.npc@narayanagroup.com Visit us:www.narayanapharmacycollege.com

EVENT OVERVIEW:

A value added program on “Introduction To Patents” was organized from **1-11-2019 TO 7-11-2019** by inviting **Mr. T. SRI KRISHNA** as a Resource Person in Narayana Pharmacy College, Nellore. Student’s form **BPHARM-II-I SEM** had actively participated in the program and has gained a thorough knowledge An Overview on What is a patent and what part does it play in intellectual property. Definition of a Patent. The significance of patents: the reasons why they are essential for business, innovation, and legal protection. Goals of the Report: objectives and the report's reach. The System of Patents History of Patents: An overview of the development of patent law over time. The goals of the patent system, which include fostering innovation and defending the rights of inventors, are the purpose of patents. Categories of Patents: several kinds of patents, such as usefulness, design, and plant patents. Inventions That Are Patentable What constitutes a patented invention, according to eligibility criteria such as novelty, non-obviousness, and utility. Things that are not eligible for patent protection include natural phenomena, laws of nature, and abstract concepts. The Process of Applying for Patents Steps Before Application: carrying out a search for patents and determining patentability, Registering.

Mrs. Sk Salma started the sessions with exclusive rights granted by the patents Duration of patent protection and renewal processes. How patent rights are enforced and handled, including infringement and litigation. Overview of international agreements and treaties. Process for obtaining patents in multiple countries. Issues related to international patent protection and enforcement. Notable patent disputes and their outcomes. How advancements in technology are influencing patent law. Ongoing changes and reforms in patent law and their implications. Anticipated challenges in the patent system, such as patent trolls and the balance between innovation and access. Recommended readings for deeper understanding of patents. Useful websites and databases for patent information. Key organizations and patent offices worldwide


PRINCIPAL
NARAYANA PHARMACY COLLEGE
NELLORE - 524 002.



NARAYANA PHARMACY COLLEGE

(Approved by PCI & AICTE, New Delhi) (Affiliated to JNTUA Ananthapuramu)
Recognized u/s 2(f) & 12(B) of the UGC Act, 1956, New Delhi,
Chinthareddypalem, Nellore-524003, A.P. India.
Phone & Fax No :0861-2317966; Cell No :+91-9100051603
Email: principal.npc@narayanagroup.com Visit us:www.narayanapharmacycollege.com



**RESOURCE PERSON Mr. T. SRI KRISHNA ON 1-11-2019 DELIVERED THE
PROGRAM ON PATENTS**


PRINCIPAL

PRINCIPAL
NARAYANA PHARMACY COLLEGE
NELLORE - 524 002


PRINCIPAL
NARAYANA PHARMACY COLLEGE
NELLORE - 524 002.



NARAYANA PHARMACY COLLEGE

(Approved by PCI & AICTE, New Delhi) (Affiliated to JNTUA, Ananthapuramu)

Chinthareddypalem, Nellore - 524 002, A. P. India.

Phone & Fax No: 0861 - 2317966 Cell No. +91 9100051603

Email. npc_nellore@yahoo.com Visit us: www.narayanapharmacycollege.com

NPC/VAC 4/2019-2020

Date: 26/12/2020

CIRCULAR

This is to inform all the students that our college is conducting a value added Program on “**BEHAVIORIAL STUDIES BY MAZE APPARATUS**” from **02-01-2020 to 07-01-2020**. All the interested candidates give their names to the coordinator on or before **30-12-2020**. Hence, all the students are here by informed to attend the classes without fail.

Venue : Seminar hall, Narayana Pharmacy College

Coordinator : Mrs. Salma Shaik,
Associate Professor
Department of Pharmaceutical Chemistry

PRINCIPAL

PRINCIPAL
NARAYANA PHARMACY COLLEGE
NELLORE - 524 002

Copy to:

1. Director's Office
2. Principal's office
3. All HODs for circulating among students

PRINCIPAL
NARAYANA PHARMACY COLLEGE
NELLORE - 524 002



Value Added Course on

BEHAVIORAL STUDIES BY MAZE APPARATUS

Date:

Resource Person:

Dr.SK.KARIMULLA Associate Professor

A. AVINASH Assistant Professor

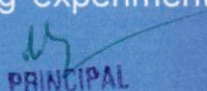
.....
2-1-2020 to 7-1-2020

SCOPE OF PATENTS

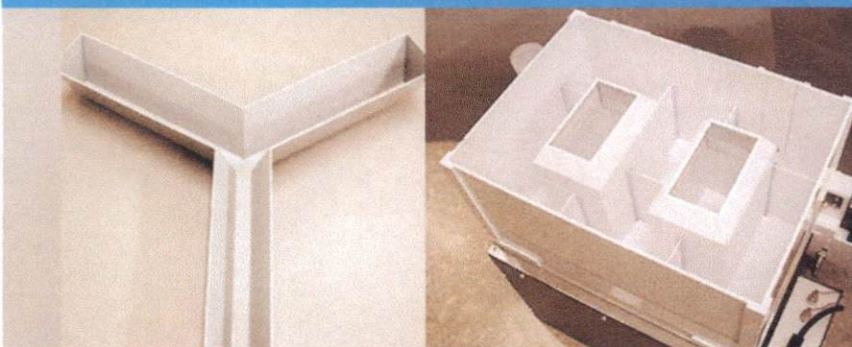
1. ****Legal Protection****: Understanding the legal framework and requirements for obtaining a patent in various jurisdictions.
2. ****Types of Patents****: Exploring different types, including utility patents (for inventions or processes), design patents (for ornamental designs), and plant patents (for new plant varieties).
3. ****Patentability Criteria****: Learning about the criteria inventions must meet to be eligible for patent protection, such as novelty, non-obviousness, and utility.

OUTCOMES

- **Insights into Behavior**: Gain insights into how animals perceive, learn, and adapt to new environments based on maze navigation studies.
- **Scientific Contributions**: Contribute new knowledge to the field of behavioral science through empirical research and experimental findings.
- **Methodological Proficiency**: Develop proficiency in using maze apparatus and conducting behavioral experiments, enhancing research capabilities.
- **Critical Thinking**: Foster critical thinking skills by analyzing experimental data and interpreting results in relation to existing theories.


PRINCIPAL
NARAYANA PHARMACY COLLEGE
NELLORE - 524 002.

LAST DATE FOR REGISTRATION :
30/12/2019





NARAYANA PHARMACY COLLEGE

(Approved by PCI & AICTE, New Delhi) (Affiliated to JNTUA Ananthapuramu)
Recognized u/s 2(f) & 12(B) of the UGC Act, 1956, New Delhi,
Chinthareddypalem, Nellore-524003, A.P. India.
Phone & Fax No :0861-2317966; Cell No :+91-9100051603
Email: principal.npc@narayanagroup.com Visit us:www.narayanapharmacycollege.com

DATE: 10-1-2020

REPORT ON BEHAVIORIAL STUDIES BY MAZE APPARATUS

1.	Name of the Activity	Behavioral Studies By Maze Apparatus		
2.	Date Of The Activity	2-1-2020 TO 7-1-2020		
3.	Organized By	Department Of Pharmaceutical Analysis		
4.	Place Of Activity	Narayana Pharmacy College -Seminar Hall		
5.	Resource person	Dr. SK. KARIMULLA, Associate Professor & Mr. A. AVINASH, Assistant Professor		
6.	Type Of Activity	Value Added Program		
7.	Participation And Involved By	Involved By BPHARM -III & IV- I SEM	Students 225	Total participation 225
8.	Content Discussed	1. Introduction 2 Types of Maze Apparatus 3. Methodology 4. Behavioral Metrics and Analysis 5. Applications and Findings 6. Challenges and Limitations 7. Case Studies and Examples 8. Future Directions 9. Resources and Further Reading		
9.	Suggested Improvements	Students should gain the knowledge		
10.	Enclosures	1. Signature forms 2. Brochure 3. Course schedules		


PRINCIPAL
NARAYANA PHARMACY COLLEGE
NELLORE



NARAYANA PHARMACY COLLEGE

(Approved by PCI & AICTE, New Delhi) (Affiliated to JNTUA Ananthapuramu)
Recognized u/s 2(f) & 12(B) of the UGC Act, 1956, New Delhi,
Chinthareddypalem, Nellore-524003, A.P. India.
Phone & Fax No :0861-2317966; Cell No :+91-9100051603
Email: principal.npc@narayanagroup.com Visit us:www.narayanapharmacycollege.com

EVENT OVERVIEW:

Resource person **Dr. SK. KARIMULLA** explained the students about the details Description of different types of maze apparatus used in behavioral studies. The role of maze studies in understanding behavior, learning, and memory. Description, design, and uses in behavioral studies. Features, purpose, and how it assesses spatial memory. Overview, use in studying spatial learning and memory. Design and application in cognitive and spatial learning studies. Purpose and design, and its role in assessing working memory and behavior. Types of subjects used (e.g., rodents) and selection criteria. Procedures for training animals and conducting tests in maze apparatus. Methods for recording and analyzing behavioral data. Metrics used to assess learning and memory (e.g., time to find the goal, number of errors). Analysis of exploratory behavior and its significance. How maze apparatus is used to study decision-making processes Measurement of stress and anxiety-related behaviors. Insights into cognitive processes such as spatial navigation and memory. Use of maze studies in understanding neurological and psychiatric conditions. How maze studies contribute to drug development and testing. Use of maze apparatus to study genetic influences and developmental changes.

Resource person **Mr. A. AVINASH** explained the students about the details. Potential issues with maze design and apparatus. Challenges in interpreting behavioral data and ensuring validity. Ethical issues related to using animals in maze studies. Examples of influential studies using maze apparatus and their findings. Recent advancements and innovative approaches in maze studies. New technologies and methods in behavioral research using maze apparatus. Integration of maze studies with other research areas. Suggestions for improving experimental design and data analysis.


PRINCIPAL
NARAYANA PHARMACY COLLEGE
NELLORE - 524 002.



NARAYANA PHARMACY COLLEGE

(Approved by PCI & AICTE, New Delhi) (Affiliated to JNTUA Ananthapuramu)

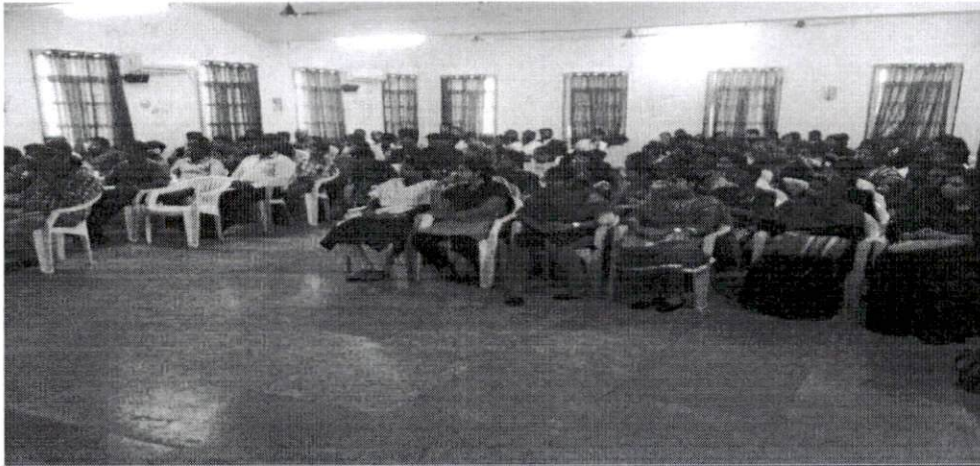
Recognized u/s 2(f) & 12(B) of the UGC Act, 1956, New Delhi,
Chinthareddypalem, Nellore-524003, A.P. India.

Phone & Fax No :0861-2317966; Cell No :+91-9100051603

Email: principal.npc@narayanagroup.com Visit us:www.narayanapharmacycollege.com



STUDENTS ARE PARTICIPATED ON 2-1-2020 FOR VALUE ADDED PROGRAM



STUDENTS ATTENDED THE VALUE ADDED PROGRAM ON 2-1-2020


PRINCIPAL

PRINCIPAL
NARAYANA PHARMACY COLLEGE
NELLORE - 524 002


PRINCIPAL
NARAYANA PHARMACY COLLEGE
NELLORE - 524 002.



NARAYANA PHARMACY COLLEGE

(Approved by PCI & AICTE, New Delhi) (Affiliated to JNTUA Ananthapuramu)
Recognized u/s 2(f) & 12(B) of the UGC Act, 1956, New Delhi,
Chinthareddypalem, Nellore-524003, A.P. India.
Phone & Fax No :0861-2317966; Cell No :+91-9100051603
Email: principal.npc@narayanagroup.com Visit us:www.narayanapharmacycollege.com

NPC/VAC 5 /2019-2020

Date: 24-12-2020

CIRCULAR

This is to inform all the students that our college is conducting a value added Program on “**YOUR FOOD AND ITS UTILIZATION**” from **01-11-2019 to 07-11-2019**. Hence, all the students are here by informed to attend the classes without fail.

Venue : Seminar hall, Narayana Pharmacy College

Coordinator : Mrs. Salma Shaik,
Associate Professor
Department of Pharmaceutical Chemistry


PRINCIPAL

**PRINCIPAL
NARAYANA PHARMACY COLLEGE
NELLORE - 524 002**

Copy to:

1. Director's Office
2. Principal's office
3. All HODs for circulating among students


**PRINCIPAL
NARAYANA PHARMACY COLLEGE
NELLORE - 524 002**



NARAYANA PHARMACY COLLEGE

Approved by PCI, UGC, 2(F) & 2B Affiliated to JNTUA (Ananthapuramu)

Chinthareddypalem, Nellore

Value Added Course on

YOUR FOOD AND ITS UTILIZATION



Introduction:

Welcome to our brochure on understanding how your food choices impact your health and well-being. This brochure aims to educate and empower you to make informed decisions about nutrition and food utilization.


PRINCIPAL

NARAYANA PHARMACY COLLEGE

NELLORE - 524 002.

RESOURCE PERSON:

SK. KARIMUNISSA Assistant Professor

SALMA SHAIK Assistant Professor

Last Date For Registration:

30-10-2019



NARAYANA PHARMACY COLLEGE

(Approved by PCI & AICTE, New Delhi) (Affiliated to JNTUA Ananthapuramu)
Recognized u/s 2(f) & 12(B) of the UGC Act, 1956, New Delhi,
Chinthareddypalem, Nellore-524003, A.P. India.
Phone & Fax No :0861-2317966; Cell No :+91-9100051603
Email: principal.npc@narayanagroup.com Visit us:www.narayanapharmacycollege.com

DATE: 11-11-2019

REPORT ON YOUR FOOD AND ITS UTILIZATION

1.	Name Of The Activity	YOUR FOOD AND ITS UTILIZATION		
2.	Date Of The Activity	1-11-2019 TO 7-11-2019		
3.	Organized By	Department Of Pharmaceutical Analysis		
4.	Place Of Activity	Narayana Pharmacy College -Seminar Hall		
5.	Resource PERSON	CH. LALITHA Assistant professor & M. KRISHNA VENI Assistant professor		
6.	Type Of Activity	Value Added Program		
7.	Participation And Involved By	Involved By BPHARM -I-I	Students 92	Total participation 92
8.	Suggested Improvements	Students should gain the knowledge		
9.	Enclosures	1. Signature forms 2. Brochure 3. Course schedules		

PRINCIPAL
NARAYANA PHARMACY COLLEGE
NELLORE - 524 002.



NARAYANA PHARMACY COLLEGE

(Approved by PCI & AICTE, New Delhi) (Affiliated to JNTUA Ananthapuramu)

Recognized u/s 2(f) & 12(B) of the UGC Act, 1956, New Delhi,

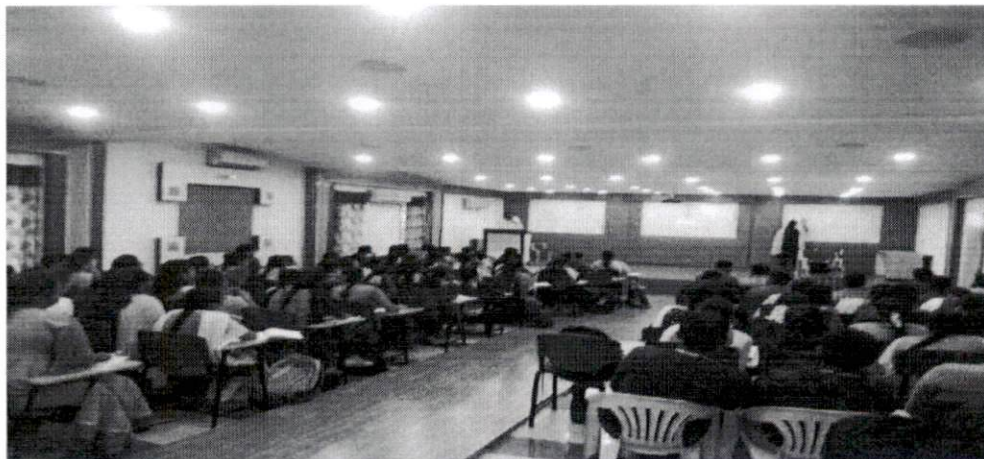
Chinthareddypalem, Nellore-524003, A.P., India.

Phone & Fax No :0861-2317966; Cell No :+91-9100051603

Email: principal.npc@narayanagroup.com Visit us:www.narayanapharmacycollege.com

EVENT OVERVIEW:

A Value added program on “Your Food and Its Utilization” was organized from 1-11-2019 TO 7-11-2019 by inviting **Mrs.Ch. Lalitha & Mrs. M. Krsihnaveni** as a Resource Person in Narayana Pharmacy College, Nellore. **92** students from B.Pharmacy I-I SEM had actively participated in the program and has gained a thorough knowledge on background information Your Food and Its Utilization “deals with what happens to food in our body and its effect on our health. You will learn about the recommended dietary intakes, nutrient needs and how to meet these needs using the food guide. You will learn to distinguish the three nutritional states – normal nutrition, under nutrition and over nutrition. We will further examine nutrition through the different physiological state of life beginning with the pregnant mother and ending with the aged. Finally the importance of developing good food habits and having the right concepts of food is stressed in this course.



STUDENTS ARE PARTICIPATED IN THE PROGRAM “YOUR FOOD AND ITS UTILIZATION”


PRINCIPAL
NARAYANA PHARMACY COLLEGE
NELLORE - 524 002.



NARAYANA PHARMACY COLLEGE

(Approved by PCI & AICTE, New Delhi) (Affiliated to JNTUA Ananthapuramu)

Recognized u/s 2(f) & 12(B) of the UGC Act, 1956, New Delhi,

Chinthareddypalem, Nellore-524003, A.P .India.

Phone & Fax No :0861-2317966; Cell No :+91-9100051603

Email: principal.npc@narayanagroup.com Visit us:www.narayanapharmacycollege.com



**STUDENTS ARE PARTICIPATED IN THE PROGRAM WITH THE RESOURCE
PERSON**


PRINCIPAL

PRINCIPAL
NARAYANA PHARMACY COLLEGE
NELLORE - 524 002


PRINCIPAL
NARAYANA PHARMACY COLLEGE
NELLORE - 524 002.



NARAYANA PHARMACY COLLEGE

(Approved by PCI & AICTE, New Delhi) (Affiliated to JNTUA Ananthapuramu)

Recognized u/s 2(f) & 12(B) of the UGC Act, 1956, New Delhi,

Chinthareddypalem, Nellore-524003, A.P. India.

Phone & Fax No :0861-2317966; Cell No :+91-9100051603

Email: principal.npc@narayanagroup.com Visit us:www.narayanapharmacycollege.com

NPC/VAC 6 /2019-2020

Date: 10-09-2019

CIRCULAR

This to inform all the students that our college is conducting a value added Program on “**TOXICOLOGY**” from **16-09-2019 to 21-09-2019**. Hence, all the students are here by informed to attend the classes without fail.

Venue : Seminar hall, Narayana Pharmacy College

Coordinator : Mrs. Salma Shaik,

Associate Professor

Department of Pharmaceutical Chemistry


PRINCIPAL

PRINCIPAL
NARAYANA PHARMACY COLLEGE
NELLORE - 524 002

Copy to:

1. Director's Office
2. Principal's office
3. All HODs for circulating among students


PRINCIPAL

NARAYANA PHARMACY COLLEGE
NELLORE - 524 002



NARAYANA PHARMACY COLLEGE

Approved by PCI, UGC, 2(F) & 2B Affiliated to JNTUA (Ananthapuramu)

Chinthareddypalem, Nellore

Value Added Course on

TOXICOLOGY

Date: **16-9-2019 TO 21-9-2019**

RESOURCE PERSON:

Dr. P. YANADIAH Associate Professor

K. ARUN CHAND ROBY Assistant Professor

Last Date For Registration:

14-9-2019

Scope:

Toxicology is the study of the adverse effects of chemical, physical, or biological agents on living organisms and the environment. It encompasses:

1. Types of Toxicants: Exploring different types of toxic substances, including chemicals, pollutants, drugs, and environmental toxins.
 2. Exposure Routes: Understanding how toxicants enter the body through ingestion, inhalation, dermal contact, and other exposure routes.
- industries and environments.

Scope:

Objectives:

- Education: Educate individuals and organizations about the principles and concepts of toxicology.
- Risk Awareness: Raise awareness about the potential risks and hazards associated with exposure to toxic substances.
- Prevention and Mitigation: Provide information and tools to prevent toxic exposures and mitigate their adverse effects.
- Policy Development: Support the development of policies and regulations to protect public health and the environment from toxicological risks.
- Research Advancement: Foster advancements in toxicological research and methodologies to improve risk assessment and management.

PRINCIPAL
NARAYANA PHARMACY COLLEGE

NELLORE - 524 002.



NARAYANA PHARMACY COLLEGE

(Approved by PCI & AICTE, New Delhi) (Affiliated to JNTUA Ananthapuramu)
Recognized u/s 2(f) & 12(B) of the UGC Act, 1956, New Delhi,
Chinthareddypalem, Nellore-524003, A.P. India.
Phone & Fax No :0861-2317966; Cell No :+91-9100051603
Email: principal.npc@narayanagroup.com Visit us:www.narayanapharmacycollege.com

DATE: 24-9-2019

REPORT ON TOXICOLOGY

1.	Name Of The Activity	TOXICOLOGY		
2.	Date Of The Activity	16-9-2019 TO 21-9-2019		
3.	Organized By	Department Of Pharmaceutical Analysis		
4.	Place Of Activity	Narayana Pharmacy College -Seminar Hall		
5.	Resource Person	Mr. P. YANDIAIAH Assistant professor & Mr. K. ARUNCHAND ROBY Assistant professor		
6.	Type Of Activity	Value Added Program		
7.	Participation And Involved By	Involved By PHARM D-IV,V	Students 72	Total participation 72
9.	Suggested Improvements	Students should gain the knowledge		
10.	Enclosures	1. Signature forms 2. Brochure 3. Course schedules		

PRINCIPAL
NARAYANA PHARMACY COLLEGE
NELLORE - 524 002.



NARAYANA PHARMACY COLLEGE

(Approved by PCI & AICTE, New Delhi) (Affiliated to JNTUA Ananthapuramu)

Recognized u/s 2(f) & 12(B) of the UGC Act, 1956, New Delhi,

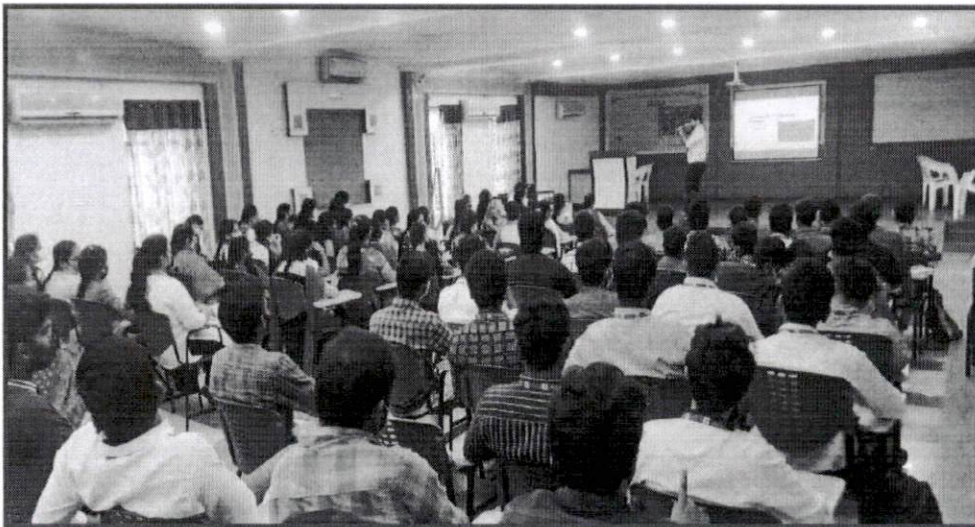
Chinthareddypalem, Nellore-524003, A.P. India.

Phone & Fax No :0861-2317966; Cell No :+91-9100051603

Email: principal.npc@narayanagroup.com Visit us:www.narayanapharmacycollege.com

EVENT OVERVIEW:

The Resource persons Mr. P. YANDIAIAH & Mr. K. ARUNCHAND ROBY a value added program was organized by Narayana Pharmacy College. Enhance public and occupational health protection by promoting awareness and understanding of toxicological risks. Improve risk management practices to minimize exposure to toxic substances in various settings. Promote environmental sustainability by reducing the impact of toxic pollutants on ecosystems. Support compliance with regulatory standards and guidelines related to toxicological assessments and safety measures. Contribute to the advancement of scientific knowledge and innovation in toxicology for better public health outcomes. The sessions were concluded by Summarize the main findings and their implications, Restate the significance of the study in the broader context, Avoid introducing new information in the conclusion



STUDENTS ARE PARTICIPATED WITH RESOURCE PERSON


PRINCIPAL
NARAYANA PHARMACY COLLEGE
NELLORE - 524 002.


PRINCIPAL
NARAYANA PHARMACY COLLEGE
NELLORE - 524 002