



NARAYANA PHARMACY COLLEGE

(Approved by PCI & AICTE, New Delhi) (Affiliated to JNTUA Ananthapuramu)

Recognized u/s 2(f) & 12(B) of the UGC Act, 1956, New Delhi,

ISO 9001:2015 Certified Institution

Chinthareddypalem, Nellore-524003, A.P .India.

Phone & Fax No :0861-2317966; Cell No :+91- 9392901053

Email: principal.npc@narayanagroup.com Visit us:www.narayanapharmacycollege.com

GEOTAGGED PHOTOS OF ALTERNATE SOURCES OF ENERGY AND ENERGY CONSERVATION MEASURES



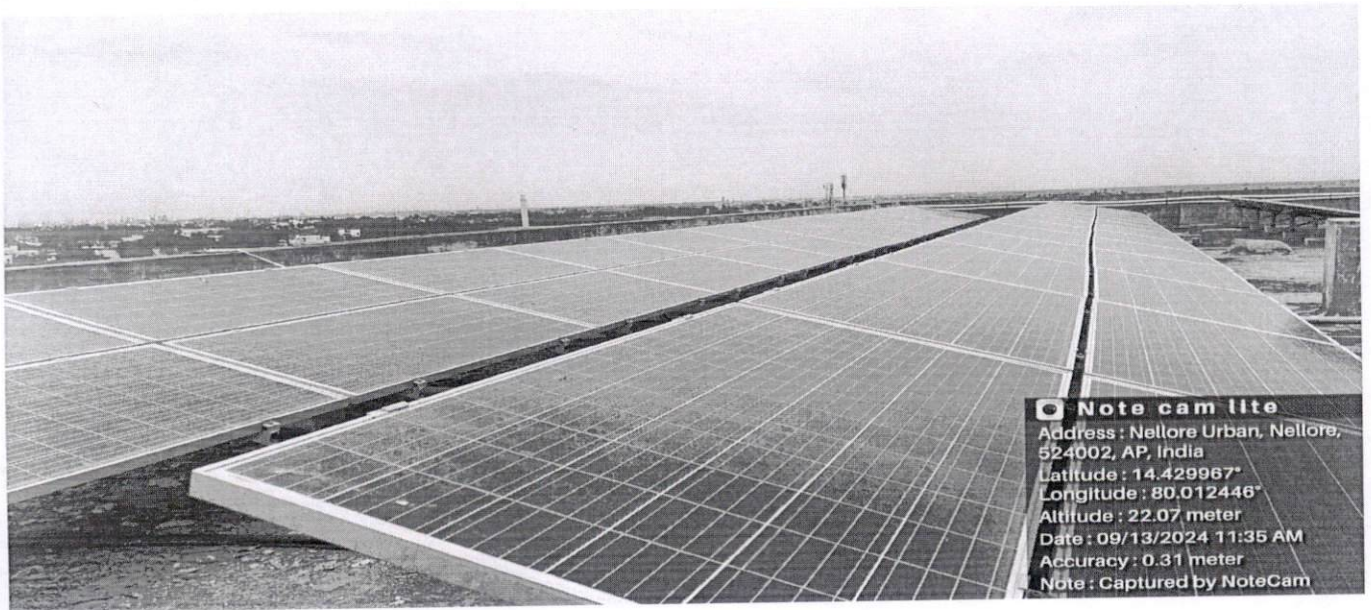
NARAYANA PHARMACY COLLEGE

(Approved by PCI & AICTE, New Delhi) (Affiliated to JNTUA Ananthapuramu)
Recognized u/s 2(f) & 12(B) of the UGC Act, 1956, New Delhi,
ISO 9001:2015 Certified Institution
Chinthareddypalem, Nellore-524003, A.P. India.
Phone & Fax No :0861-2317966; Cell No :+91- 9392901053
Email: principal.npc@narayanagroup.com Visit us:www.narayanapharmacycollege.com

7.1.2. 1. GEO TAGGED PHOTOS OF ALTERNATE SOURCES OF ENERGY



Roof top solar energy panel geotagged photos



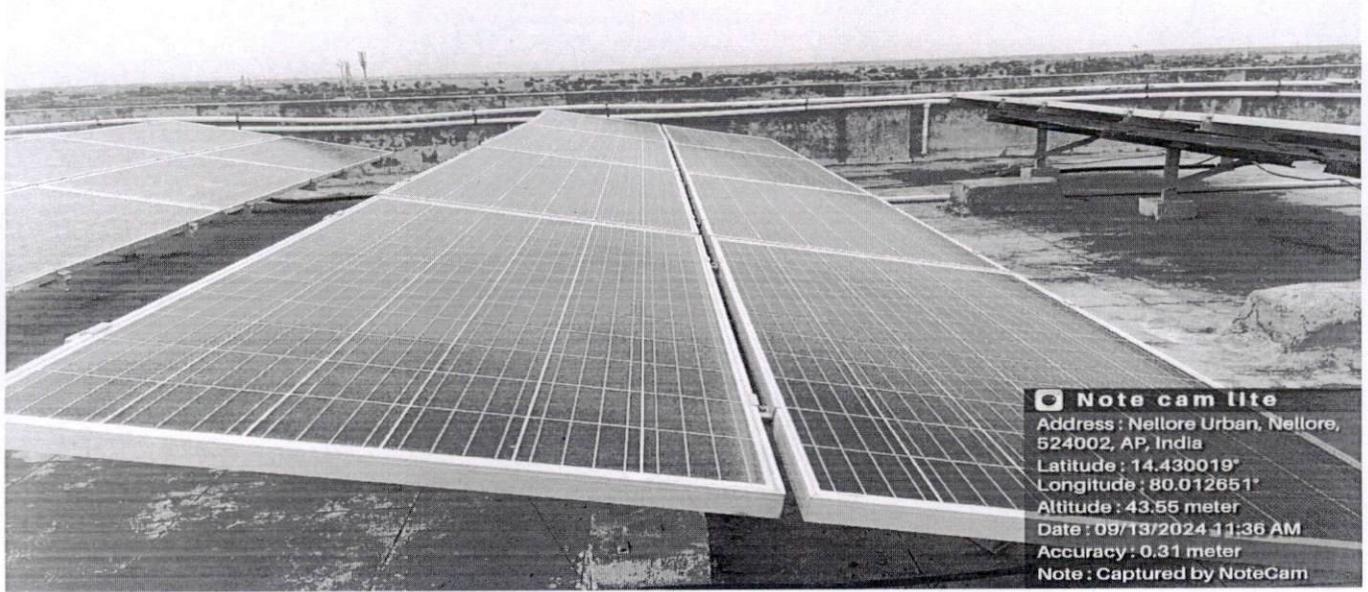
Roof top solar energy panel geotagged photos


PRINCIPAL
NARAYANA PHARMACY COLLEGE
NELLORE - 524 002.



NARAYANA PHARMACY COLLEGE

(Approved by PCI & AICTE, New Delhi) (Affiliated to JNTUA Ananthapuramu)
Recognized u/s 2(f) & 12(B) of the UGC Act, 1956, New Delhi,
ISO 9001:2015 Certified Institution
Chinthareddypalem, Nellore-524003, A.P. India.
Phone & Fax No :0861-2317966; Cell No :+91- 9392901053
Email: principal.npc@narayanagroup.com Visit us:www.narayanapharmacycollege.com



Roof top solar energy panel geotagged photos

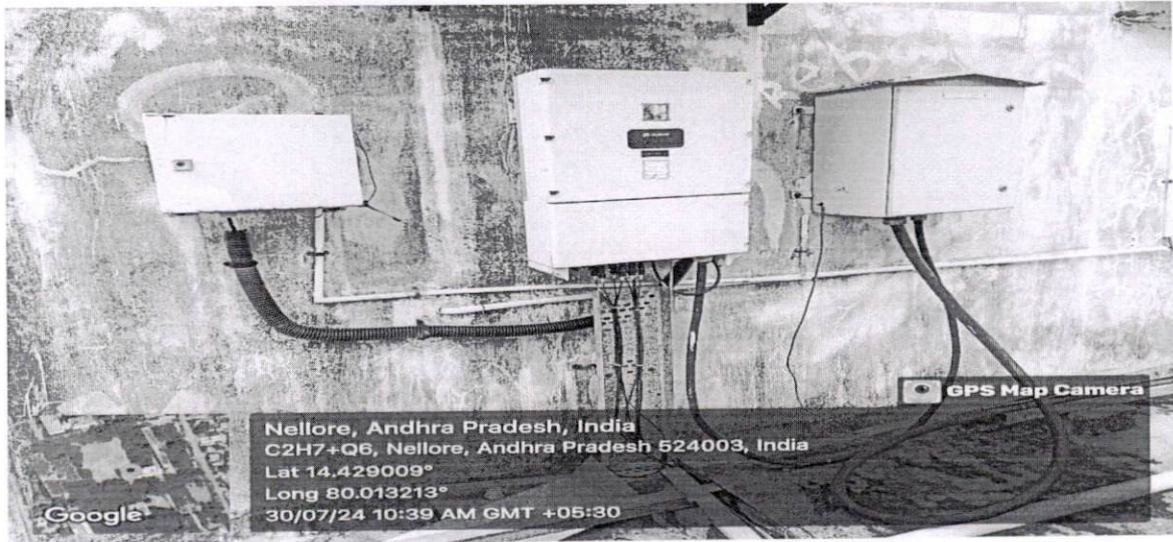


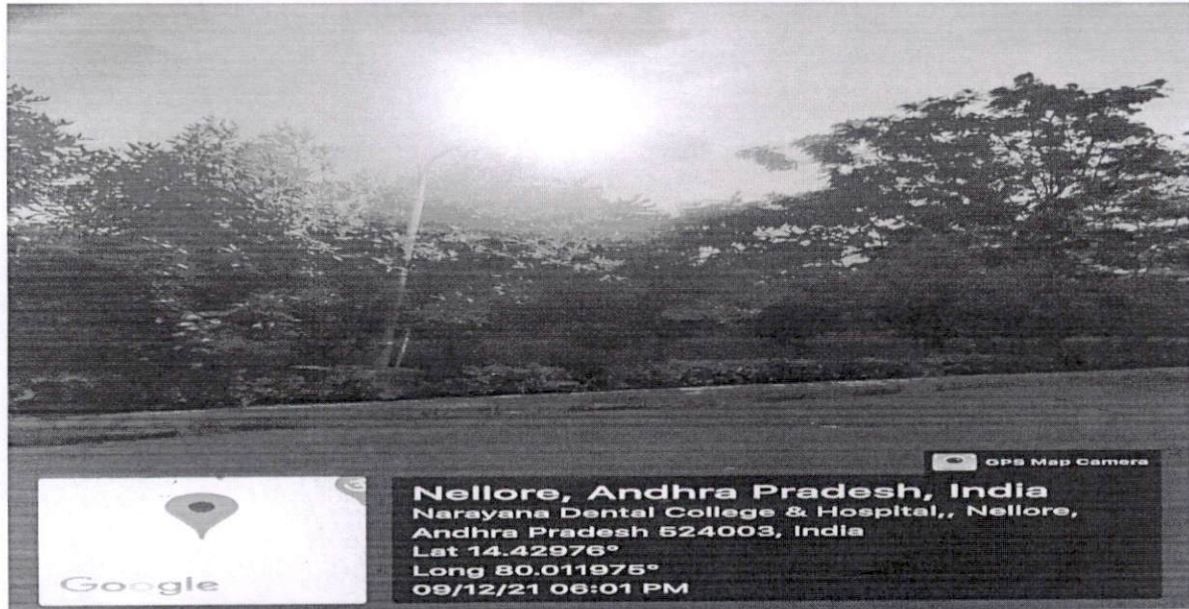
Photo of INVERTER 30 KW 1no


PRINCIPAL
NARAYANA PHARMACY COLLEGE
NELLORE - 524 002.

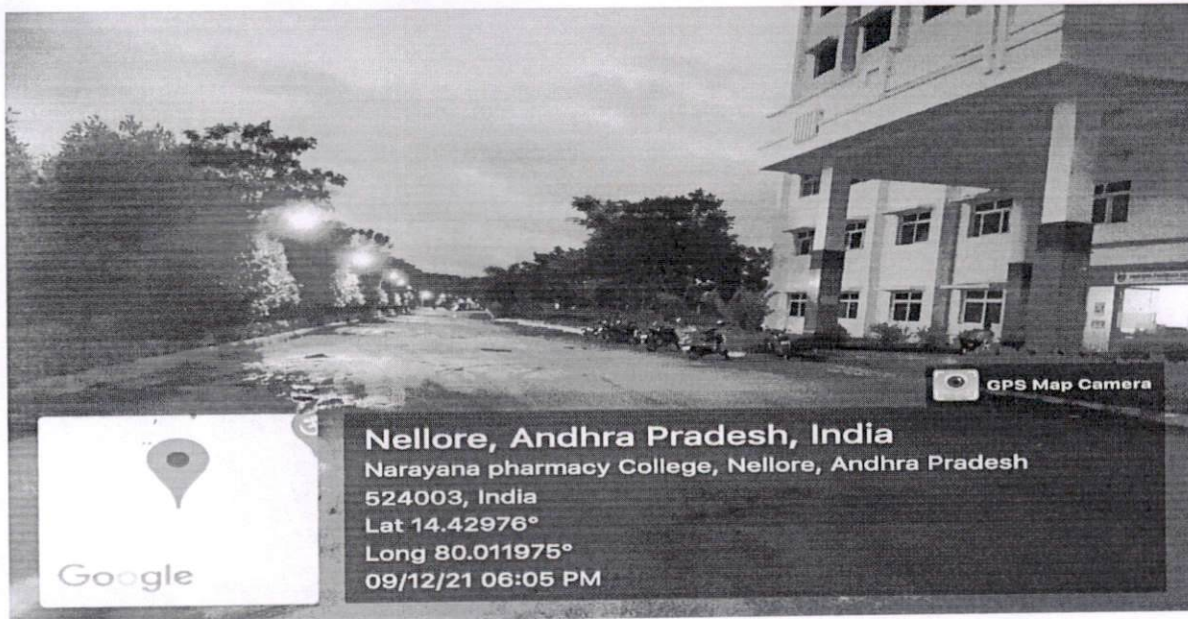


NARAYANA PHARMACY COLLEGE

(Approved by PCI & AICTE, New Delhi) (Affiliated to JNTUA Ananthapuramu)
Recognized u/s 2(f) & 12(B) of the UGC Act, 1956, New Delhi,
ISO 9001:2015 Certified Institution
Chinthareddypalem, Nellore-524003, A.P. India.
Phone & Fax No :0861-2317966; Cell No :+91- 9392901053
Email: principal.npc@narayanagroup.com Visit us:www.narayanapharmacycollege.com



Geotagged LED lighting at the entrance



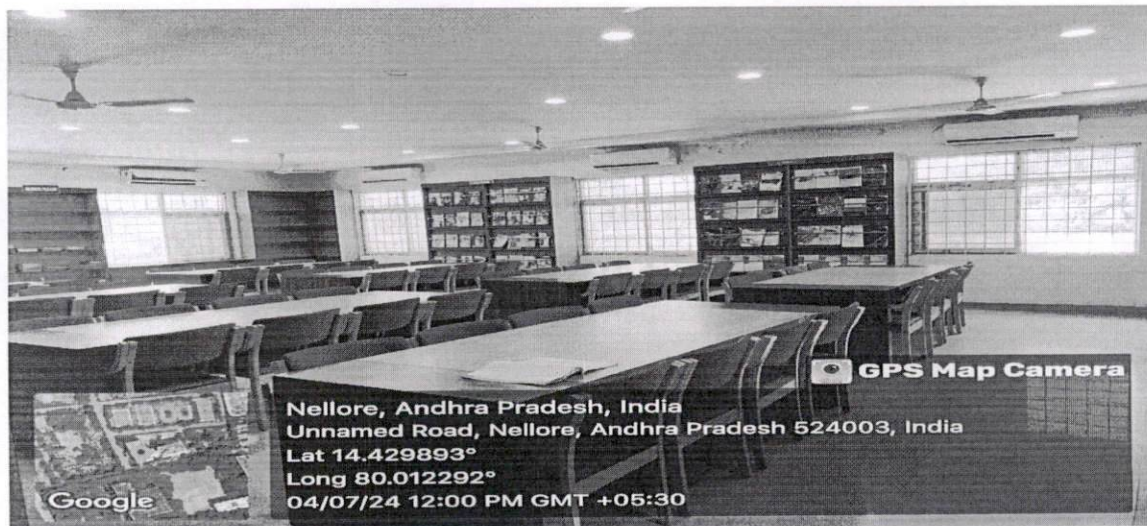
LED bulbs usage in campus


PRINCIPAL
NARAYANA PHARMACY COLLEGE
NELLORE - 524 002.

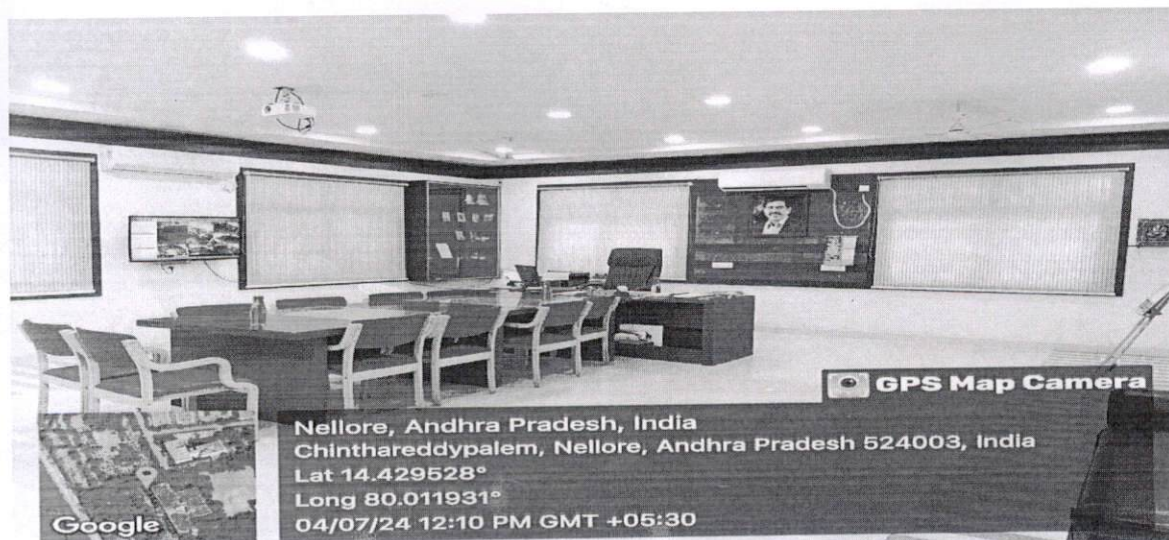


NARAYANA PHARMACY COLLEGE

(Approved by PCI & AICTE, New Delhi) (Affiliated to JNTUA Ananthapuramu)
Recognized u/s 2(f) & 12(B) of the UGC Act, 1956, New Delhi,
ISO 9001:2015 Certified Institution
Chinthareddypalem, Nellore-524003, A.P. India.
Phone & Fax No :0861-2317966; Cell No :+91- 9392901053
Email: principal.npc@narayanagroup.com Visit us:www.narayanapharmacycollege.com



LED LIGHTS IN PRINCIPAL ROOM



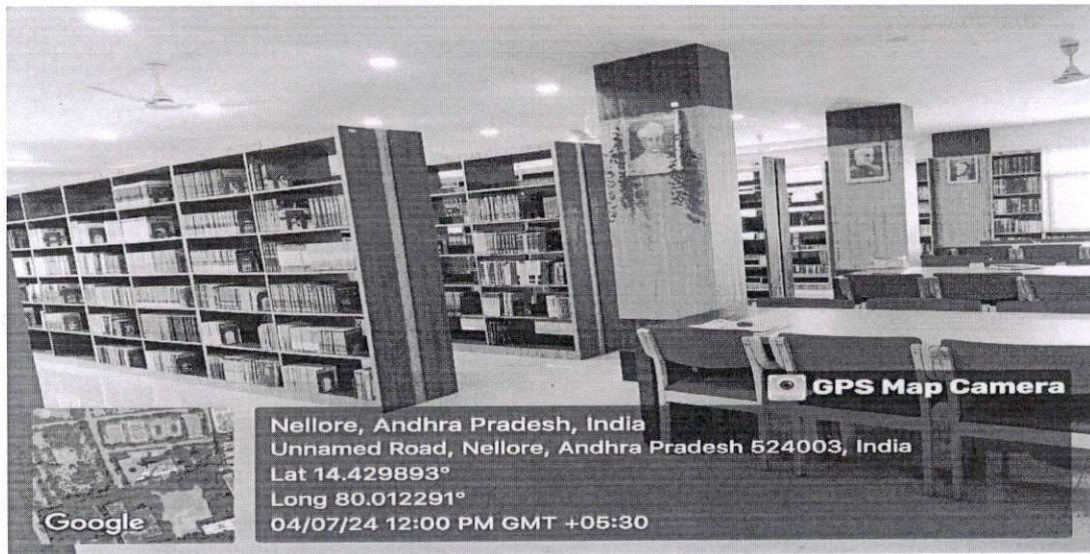
Library with LED bulbs


PRINCIPAL
NARAYANA PHARMACY COLLEGE
NELLORE - 524 002.

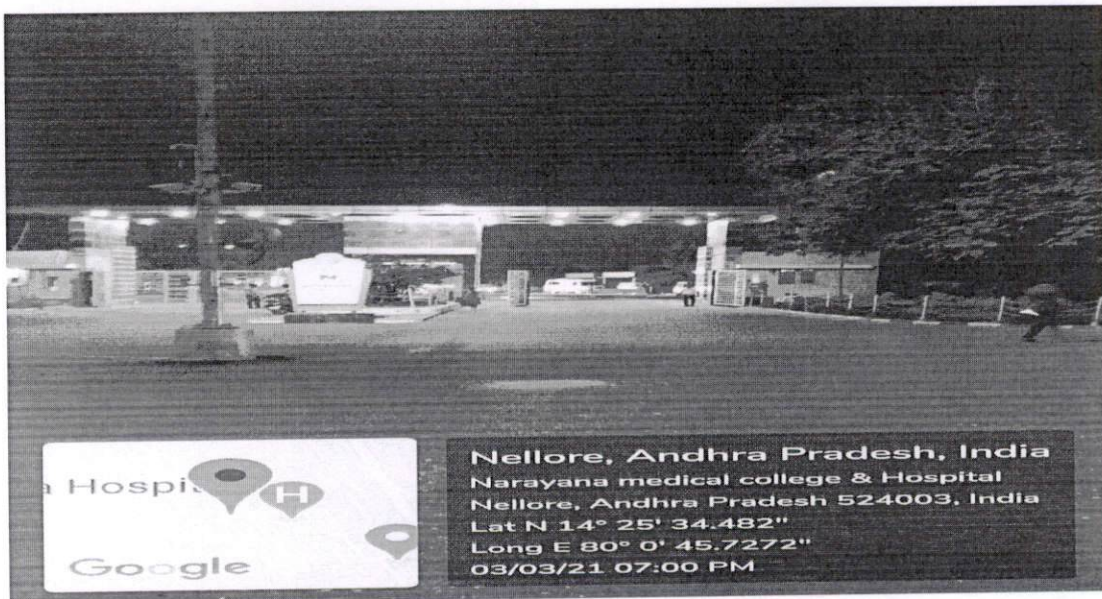


NARAYANA PHARMACY COLLEGE

(Approved by PCI & AICTE, New Delhi) (Affiliated to JNTUA Ananthapuramu)
Recognized u/s 2(f) & 12(B) of the UGC Act, 1956, New Delhi,
ISO 9001:2015 Certified Institution
Chinthareddypalem, Nellore-524003, A.P. India.
Phone & Fax No :0861-2317966; Cell No :+91- 9392901053
Email: principal.npc@narayanagroup.com Visit us:www.narayanapharmacycollege.com



Library with LED bulbs



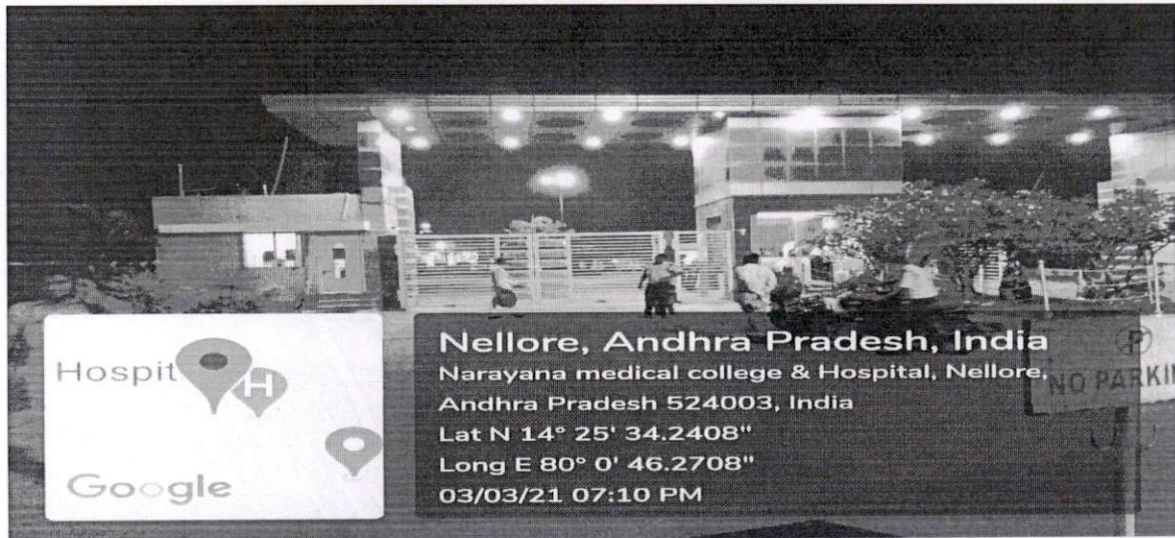
LED LIGHTS AT MAIN GATE

Handwritten signature
PRINCIPAL
NARAYANA PHARMACY COLLEGE
NELLORE - 524 002.

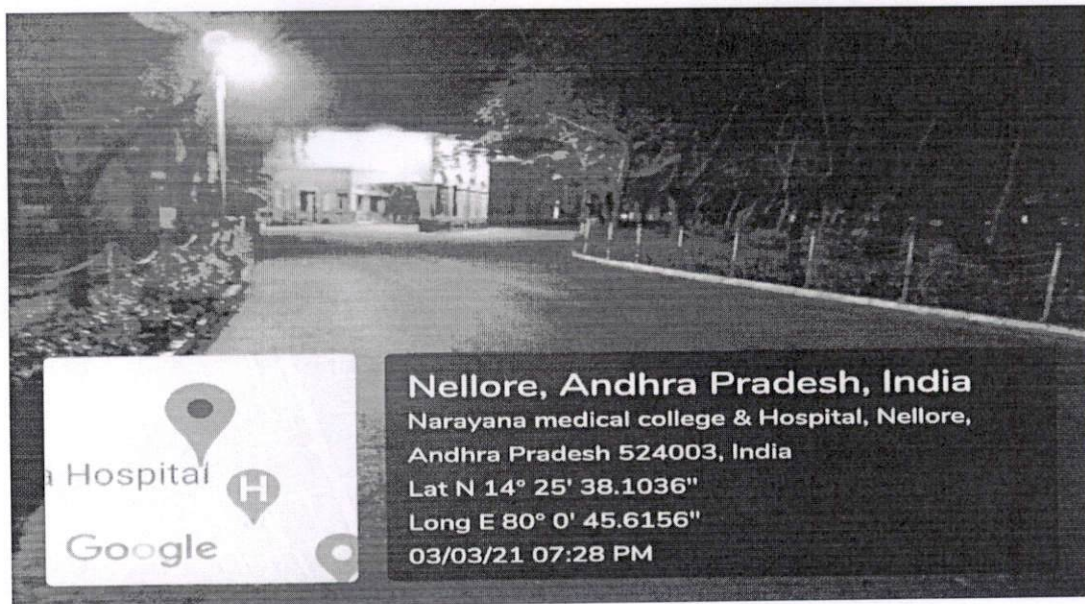


NARAYANA PHARMACY COLLEGE

(Approved by PCI & AICTE, New Delhi) (Affiliated to JNTUA Ananthapuramu)
Recognized u/s 2(f) & 12(B) of the UGC Act, 1956, New Delhi,
ISO 9001:2015 Certified Institution
Chinthareddypalem, Nellore-524003, A.P. India.
Phone & Fax No :0861-2317966; Cell No :+91- 9392901053
Email: principal.npc@narayanagroup.com Visit us:www.narayanapharmacycollege.com



LED STREET LIGHTING



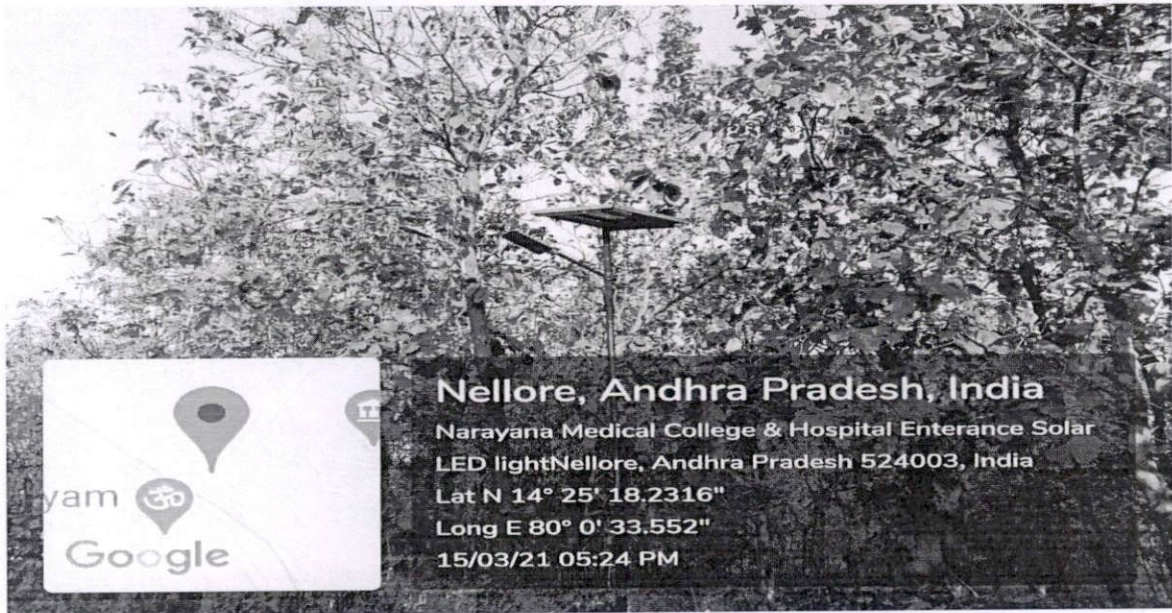
LED SOLAR STREET LIGHTS WITH LIGHT DEPENDANT PHOTO SENSORS


PRINCIPAL
NARAYANA PHARMACY COLLEGE
NELLORE - 524 002.

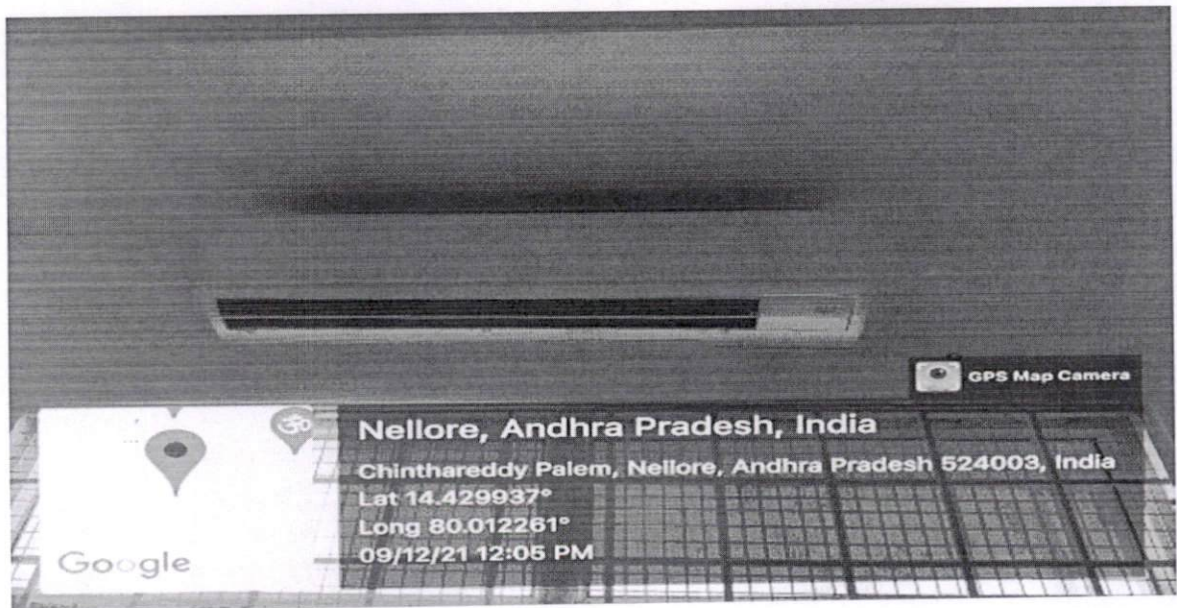


NARAYANA PHARMACY COLLEGE

(Approved by PCI & AICTE, New Delhi) (Affiliated to JNTUA Ananthapuramu)
Recognized u/s 2(f) & 12(B) of the UGC Act, 1956, New Delhi,
ISO 9001:2015 Certified Institution
Chinthareddypalem, Nellore-524003, A.P. India.
Phone & Fax No :0861-2317966; Cell No :+91- 9392901053
Email: principal.npc@narayanagroup.com Visit us:www.narayanapharmacycollege.com



Sensor-based energy conservation



5 star air conditioner-1 equipment to save energy in library


PRINCIPAL
NARAYANA PHARMACY COLLEGE
NELLORE - 524 002.



NARAYANA PHARMACY COLLEGE

(Approved by PCI & AICTE, New Delhi) (Affiliated to JNTUA Ananthapuramu)

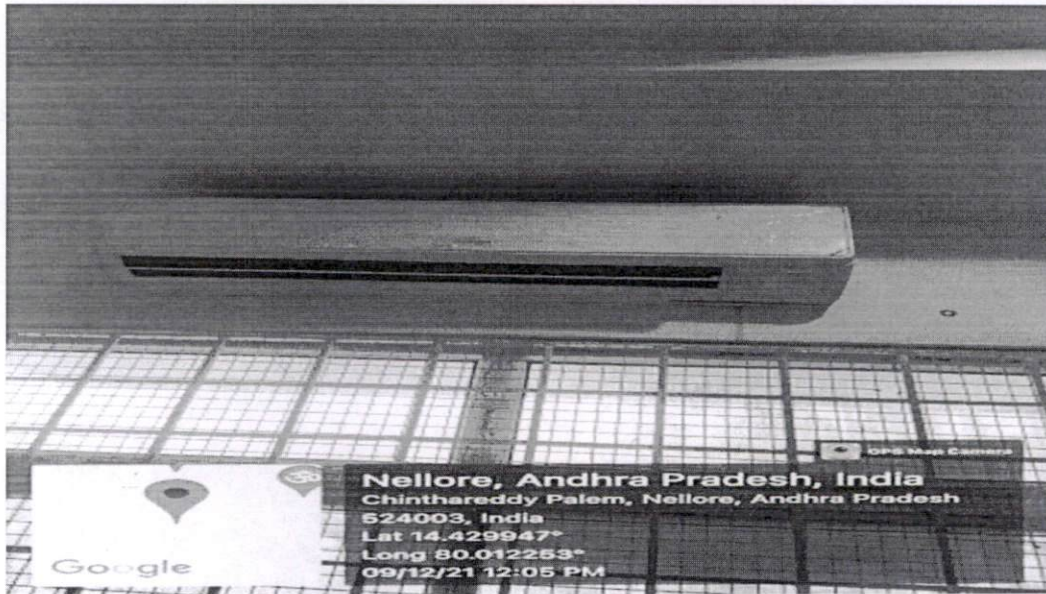
Recognized u/s 2(f) & 12(B) of the UGC Act, 1956, New Delhi,

ISO 9001:2015 Certified Institution

Chinthareddypalem, Nellore-524003, A.P .India.

Phone & Fax No :0861-2317966; Cell No :+91- 9392901053

Email: principal.npc@narayanagroup.com Visit us:www.narayanapharmacycollege.com



5 star air conditioner-2 equipment to save energy in library


PRINCIPAL

NARAYANA PHARMACY COLLEGE

NELLORE - 524 002.



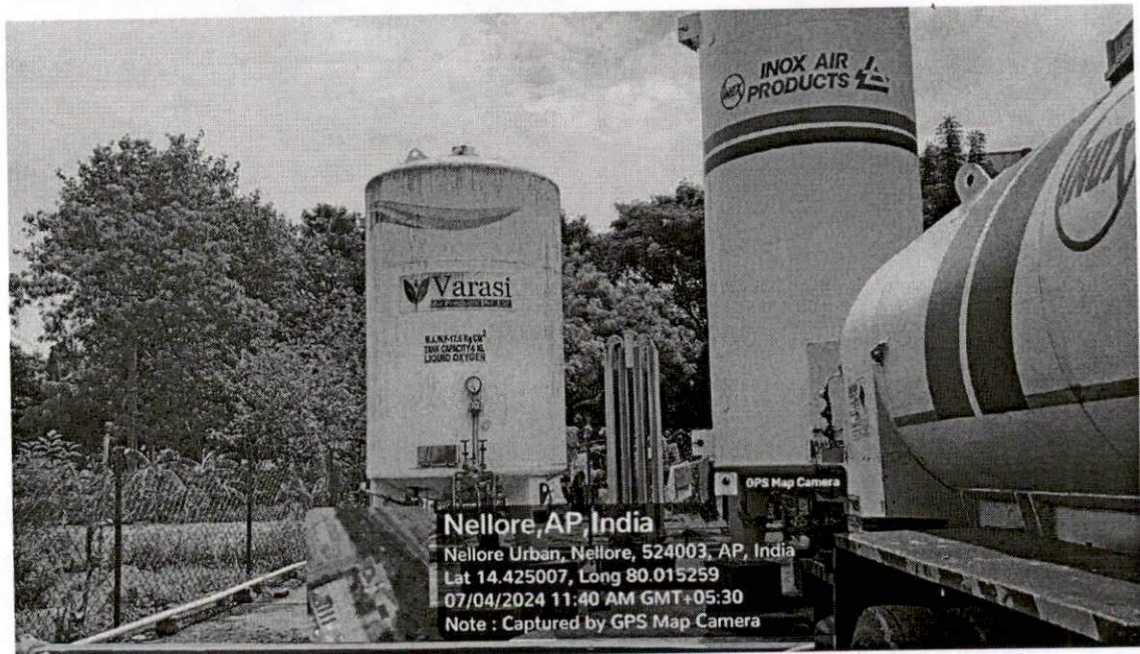
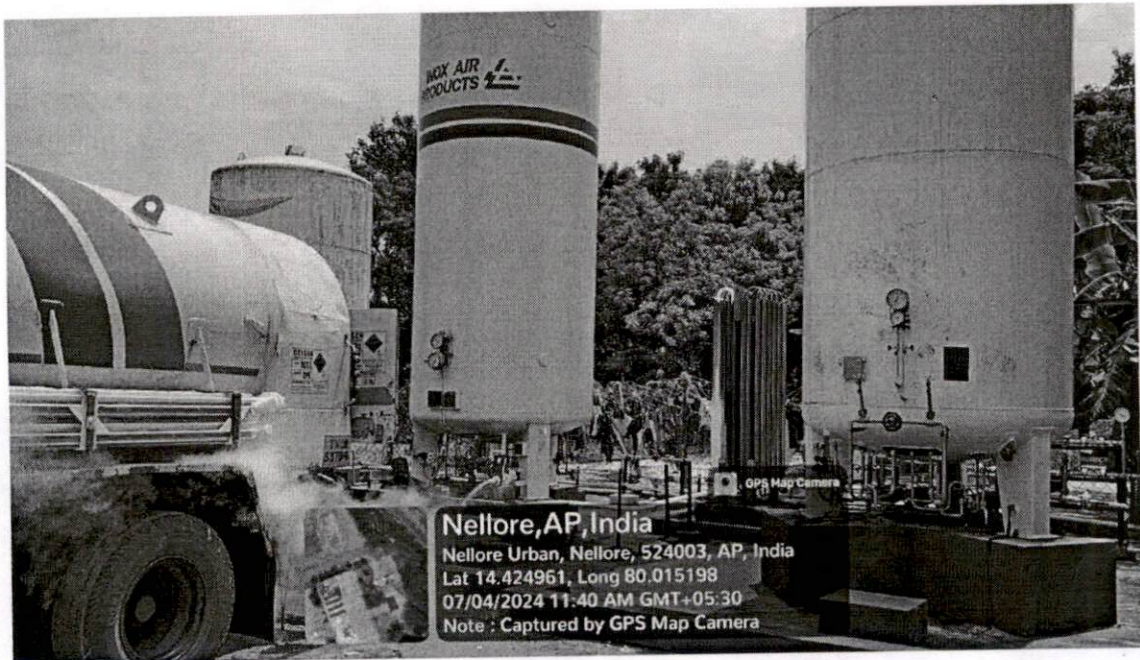
NARAYANA PHARMACY COLLEGE

(Approved by PCI & AICTE, New Delhi) (Affiliated to JNTUA Ananthapuramu)
Recognized u/s 2(f) & 12(B) of the UGC Act, 1956, New Delhi,
ISO 9001:2015 Certified Institution

Chinthareddypalem, Nellore-524003, A.P. India.

Phone & Fax No :0861-2317966; Cell No :+91- 9392901053

Email: principal.npc@narayanagroup.com Visit us:www.narayanapharmacycollege.com



Geotagged photo of Biogas plant


PRINCIPAL
NARAYANA PHARMACY COLLEGE
NELLORE - 524 002